

Recombinant Human SYT1 Protein (Glu136-Lys422), N-His tagged

Cat. No. SYT1-6388H Lot. No. (See product label)

SPECIFICATION

Product Overview	Recombinant human SYT1 (Glu136-Lys422) fused with the N-His tag was expressed in E. coli.
Species	Human
Source	E.coli
ProteinLength	Glu136-Lys422
Form	Lyophilized powder/frozen liquid
Molecular Mass	35.25 kDa
Purity	> 90 % as determined by SDS-PAGE
Notes	For research use only.
Storage	Use a manual defrost freezer and avoid repeated freeze thaw cycles. Store at 2 to 8 centigrade for one week. Store at -20 to -80 centigrade for twelve months from the date of receipt.
Storage Buffer	0.01M PBS, pH 7.4, 0.02 % NLS
Reconstitution	Reconstitute in sterile water for a stock solution.

 Tel: 1-631-559-9269 1-516-512-3133

 Email: info@creative-biomart.com  Fax: 1-631-938-8127

 45-1 Ramsey Road, Shirley, NY 11967, USA

Shipping They are shipped out with dry ice/blue ice unless customers require otherwise.

GENE INFORMATION

Gene Name SYT1 synaptotagmin I [Homo sapiens (human)]

Official Symbol SYT1

Synonyms SYT1; synaptotagmin I; SVP65, SYT; synaptotagmin-1; P65; sytl; synaptotagmin 1; SYT; SVP65; DKFZp781D2042;

Gene ID 6857

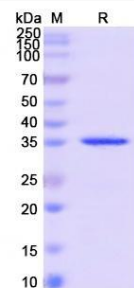
mRNA Refseq NM_001135805

Protein Refseq NP_001129277

MIM 185605

UniProt ID P21579

SDS-PAGE



 Tel: 1-631-559-9269 1-516-512-3133

 Email: info@creative-biomart.com  Fax: 1-631-938-8127

 45-1 Ramsey Road, Shirley, NY 11967, USA