

# Recombinant Human SYTL2 Protein, Myc/DDK-tagged, C13 and N15-labeled

**Cat. No.** SYTL2-3042H    **Lot. No.** (See product label)

## SPECIFICATION

### Product Overview

SYTL2 MS Standard C13 and N15-labeled recombinant protein (NP\_115755) with a C-terminal MYC/DDK tag, was expressed in HEK293 cells.

### Species

Human

### Source

HEK293

### Description

The protein encoded by this gene is a synaptotagmin-like protein (SLP) that belongs to a C2 domain-containing protein family. The SLP homology domain (SHD) of this protein has been shown to specifically bind the GTP-bound form of Ras-related protein Rab-27A (RAB27A). This protein plays a role in RAB27A-dependent vesicle trafficking and controls melanosome distribution in the cell periphery. Alternative splicing results in multiple transcript variants encoding distinct isoforms.

### Molecular Mass

42.6 kDa

### AA Sequence

MSKSVPAFLQDESDDRETDTASESSYQLSRHKKSPSSLTNLSSSSGMTSLSSVSGS  
VMSVYSGDFGNLEVKGNIQFAIEYVESLKELVHVFVAQCKDLAAADVKKQRSDPYVKA  
YLLPDKGKMGKKKTLVVKKTLNPVYNEILRYKIEKQILKTQKLNLSIWHRDTFKRNSFL  
GEVELDLETWDWDNKQNKQLRWYPLKRKTAPVALEAENRGEMKLALQYVPEPVP  
KKLPTTGEVHIWVKECLDLLRGSLSHNSFVKCTILPDTSRKSRQKTRAVGKTTNPIF  
NHTMVYDGFDPEDLMEACVELTVWDHYKLTNQFLGGLRIGFGTGKSYGTEVDWMD  
STSEEVALWEKMNPNNTWIEATLPLRMLLIKISKTRTRPLEQKLISEEDLAANDILD

 Tel: 1-631-559-9269    1-516-512-3133

 Email: [info@creative-biomart.com](mailto:info@creative-biomart.com)     Fax: 1-631-938-8127

 45-1 Ramsey Road, Shirley, NY 11967, USA

	YKDDDDKV
<b>Purity</b>	> 80% as determined by SDS-PAGE and Coomassie blue staining
<b>Stability</b>	Stable for 3 months from receipt of products under proper storage and handling conditions.
<b>Storage</b>	Store at -80 centigrade. Avoid repeated freeze-thaw cycles.
<b>Concentration</b>	50 µg/mL as determined by BCA
<b>Storage Buffer</b>	100 mM glycine, 25 mM Tris-HCl, pH 7.3.
<b>GENE INFORMATION</b>	
<b>Gene Name</b>	SYTL2 synaptotagmin like 2 [ Homo sapiens (human) ]
<b>Official Symbol</b>	SYTL2
<b>Synonyms</b>	SYTL2; synaptotagmin like 2; EXO4; SLP2; SLP2A; SGA72M; CHR11SYT; PPP1R151; synaptotagmin-like protein 2; breast cancer-associated antigen SGA-72M; chromosome 11 synaptotagmin; exophilin-4; protein phosphatase 1, regulatory subunit 151
<b>Gene ID</b>	54843
<b>mRNA Refseq</b>	NM_032379
<b>Protein Refseq</b>	NP_115755
<b>MIM</b>	612880

 Tel: 1-631-559-9269 1-516-512-3133

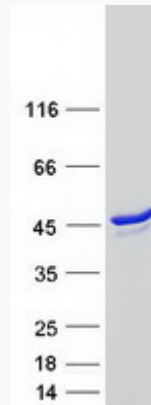
 Email: [info@creative-biomart.com](mailto:info@creative-biomart.com)  Fax: 1-631-938-8127

 45-1 Ramsey Road, Shirley, NY 11967, USA

UniProt ID

Q9HCH5

SDS-PAGE



 Tel: 1-631-559-9269 1-516-512-3133

 Email: [info@creative-biomart.com](mailto:info@creative-biomart.com)  Fax: 1-631-938-8127

 45-1 Ramsey Road, Shirley, NY 11967, USA