

# Recombinant Human SYTL2 Protein (Met559-Leu880), N-His tagged

**Cat. No.** SYTL2-5451H    **Lot. No.** (See product label)

## SPECIFICATION

|                         |  |
|-------------------------|--|
| <b>Product Overview</b> | Recombinant human SYTL2 (Met559-Leu880) fused with the N-His tag was expressed in E. coli.   |
| <b>Species</b>          | Human  |
| <b>Source</b>           | E.coli   |
| <b>ProteinLength</b>    | Met559-Leu880  |
| <b>Description</b>      | The protein encoded by this gene is a synaptotagmin-like protein (SLP) that belongs to a C2 domain-containing protein family. The SLP homology domain (SHD) of this protein has been shown to specifically bind the GTP-bound form of Ras-related protein Rab-27A (RAB27A). This protein plays a role in RAB27A-dependent vesicle trafficking and controls melanosome distribution in the cell periphery. Alternative splicing results in multiple transcript variants encoding distinct isoforms. |
| <b>Form</b>             | Lyophilized powder/frozen liquid   |
| <b>Molecular Mass</b>   | 38.96 kDa  |
| <b>Purity</b>           | > 90 % as determined by SDS-PAGE   |
| <b>Notes</b>            | For research use only.   |

 Tel: 1-631-559-9269    1-516-512-3133

 Email: [info@creative-biomart.com](mailto:info@creative-biomart.com)     Fax: 1-631-938-8127

 45-1 Ramsey Road, Shirley, NY 11967, USA

|                       |   |
|-----------------------|---|
| <b>Storage</b>        | Use a manual defrost freezer and avoid repeated freeze thaw cycles. Store at 2 to 8 centigrade for one week. Store at -20 to -80 centigrade for twelve months from the date of receipt. |
| <b>Storage Buffer</b> | 0.01M PBS, pH 7.4, 0.02 % NLS   |
| <b>Reconstitution</b> | Reconstitute in sterile water for a stock solution.   |
| <b>Shipping</b>       | They are shipped out with dry ice/blue ice unless customers require otherwise.  |

## GENE INFORMATION

|                        |   |
|------------------------|---|
| <b>Gene Name</b>       | SYTL2 synaptotagmin like 2 [ Homo sapiens (human) ]                         |
| <b>Official Symbol</b> | SYTL2   |
| <b>Synonyms</b>        | SYTL2; synaptotagmin like 2; EXO4; SLP2; SLP2A; SGA72M; CHR11SYT; PPP1R151; |
| <b>Gene ID</b>         | 54843   |
| <b>mRNA Refseq</b>     | NM_032943   |
| <b>Protein Refseq</b>  | NP_116561   |
| <b>MIM</b>             | 612880  |
| <b>UniProt ID</b>      | Q9HCH5  |

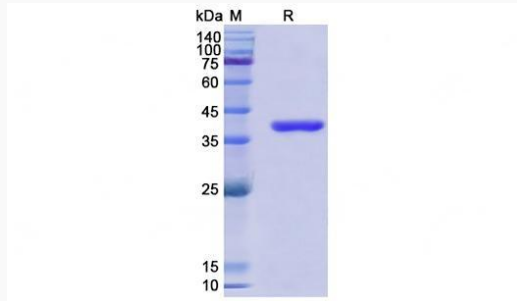
 Tel: 1-631-559-9269 1-516-512-3133

 Email: [info@creative-biomart.com](mailto:info@creative-biomart.com)  Fax: 1-631-938-8127

 45-1 Ramsey Road, Shirley, NY 11967, USA



SDS-PAGE



Tel: 1-631-559-9269 1-516-512-3133

Email: [info@creative-biomart.com](mailto:info@creative-biomart.com) Fax: 1-631-938-8127

45-1 Ramsey Road, Shirley, NY 11967, USA