

## Recombinant Mouse Saa2 protein, His & GST-tagged

Cat. No. Saa2-1808M    Lot. No. (See product label)

### SPECIFICATION

<b>Product Overview</b>	Recombinant Mouse Saa2 aa. (Gly20~Tyr122 (Accession # P05367)) fused with N-terminal His & GST tag was produced in E. coli cells.
<b>Species</b>	Mouse
<b>Source</b>	E.coli
<b>ProteinLength</b>	Gly20~Tyr122
<b>Form</b>	Freeze-dried powder
<b>Molecular Mass</b>	Predicted Molecular Mass: 43.7kDa.
<b>Endotoxin</b>	<1.0EU per 1ug (determined by the LAL method)
<b>Purity</b>	>95%
<b>Characteristic</b>	The isoelectric point is 6.4.
<b>Applications</b>	SDS-PAGE; WB; ELISA; IP.
<b>Stability</b>	The thermal stability is described by the loss rate of the target protein. The loss rate was determined by accelerated thermal degradation test, that is, incubate the protein at 37°C for 48h, and no obvious degradation and precipitation were observed. (Referring from China Biological Products Standard, which was calculated by the

 Tel: 1-631-559-9269    1-516-512-3133

 Email: [info@creative-biomart.com](mailto:info@creative-biomart.com)     Fax: 1-631-938-8127

 45-1 Ramsey Road, Shirley, NY 11967, USA

Arrhenius equation.) The loss of this protein is less than 5% within the expiration date under appropriate storage condition.

**Storage**

Avoid repeated freeze/thaw cycles. Store at 2-8°C for one month. Aliquot and store at -80°C for 12 months.

**Storage Buffer**

Supplied as lyophilized form in PBS, pH7.4, containing 5% trehalose, 0.01% sarcosyl.

**Reconstitution**

Reconstitute in sterile PBS, pH7.2-pH7.4.

## GENE INFORMATION

**Gene Name**

[Saa2 serum amyloid A 2 \[ Mus musculus \(house mouse\) \]](#)

**Official Symbol**

[Saa2](#)

**Synonyms**

Eri1; exoribonuclease 1; Thex1; eri-1; 3'hexo; 3110010F15Rik; 3'-5' exoribonuclease 1; 3'-5' exonuclease ERI1; enhanced RNAi protein 1; eri-1 homolog; histone mRNA 3' end-specific exonuclease; histone mRNA 3'-exonuclease 1; three prime histone mRNA exonuclease 1

**Gene ID**

[20209](#)

**mRNA Refseq**

[NM\\_011314.2](#)

**Protein Refseq**

[NP\\_035444.1](#)

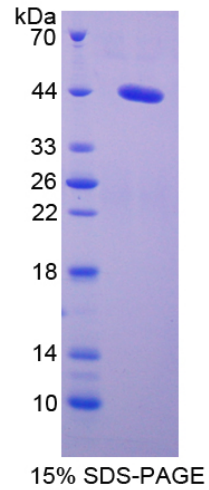
**UniProt ID**

[P05367](#)

 Tel: 1-631-559-9269 1-516-512-3133

 Email: [info@creative-biomart.com](mailto:info@creative-biomart.com)  Fax: 1-631-938-8127

 45-1 Ramsey Road, Shirley, NY 11967, USA



SDS-PAGE

Tel: 1-631-559-9269 1-516-512-3133

Email: [info@creative-biomart.com](mailto:info@creative-biomart.com) Fax: 1-631-938-8127

45-1 Ramsey Road, Shirley, NY 11967, USA