

Recombinant Rat Scarb2 protein, His&Myc-tagged

Cat. No. Scarb2-686R Lot. No. (See product label)

SPECIFICATION

Product Overview	Recombinant Rat Scarb2 protein(P27615)(28-433aa), fused with N-terminal His tag and C-terminal Myc tag, was expressed in E.coli.
Species	Rat
Source	E.coli
ProteinLength	28-433aa
Form	If the delivery form is liquid, the default storage buffer is Tris/PBS-based buffer, 5%-50% glycerol. If the delivery form is lyophilized powder, the buffer before lyophilization is Tris/PBS-based buffer, 6% Trehalose, pH 8.0.
Molecular Mass	53.7 kDa
Purity	Greater than 90% as determined by SDS-PAGE.
Storage	Store at -20°C/-80°C upon receipt, aliquoting is necessary for mutiple use. Avoid repeated freeze-thaw cycles.
Reconstitution	We recommend that this vial be briefly centrifuged prior to opening to bring the contents to the bottom. Please reconstitute protein in deionized sterile water to a concentration of 0.1-1.0 mg/mL. We recommend to add 5-50% of glycerol (final concentration) and aliquot for long-term storage at -20°C/-80°C.

 Tel: 1-631-559-9269 1-516-512-3133

 Email: info@creative-biomart.com  Fax: 1-631-938-8127

 45-1 Ramsey Road, Shirley, NY 11967, USA

AA Sequence

VFQKAVDQTIEKNMVLQNGTKVFDSWEKPPLPVYIQFYFFNVNPEEILQGEIPLLEE
 VGPYTYRELRNKANVQFGENGTTISAVTNKAYIFERNQSVGDPTVDLIRTINIPLLTVV
 EMAQQPFLREIIEAMLKAYQQTLFVTHTVHELLWGYKDEVLSLVHIFRPDVSPNFGFLF
 YERNGTNDGEYVFLTGEDNYLNFTKIVEWNGKTSLDWWTDDTCNMINGTDGDSFH
 PLISKDETLYIFPSDFCRSVYITFSSFENVEGLPAFRYKVPAEILANSSENAGFCIPEG
 NCMDAGVLNVSICKNGAPIIMSFPHFYQADEKFVSAIKGMRPNKEEHESFVDINPLTG
 IILRGAKRFQINTYVKKLDDFVETGNIRTMVFPVMYL NESVLIDKETASQLKSVINTTL

GENE INFORMATION

Gene Name [Scarb2 scavenger receptor class B, member 2 \[Rattus norvegicus \]](#)

Official Symbol [Scarb2](#)

Synonyms

SCARB2; scavenger receptor class B, member 2; lysosome membrane protein 2; LIMP II; CD36 antigen-like 2; lysosome membrane protein II; 85 kDa lysosomal membrane sialoglycoprotein; CD36 antigen (collagen type I receptor, thrombospondin receptor)-like 2; LGP85; Cd36l2; LimpII;

Gene ID [117106](#)

mRNA Refseq [NM_054001](#)

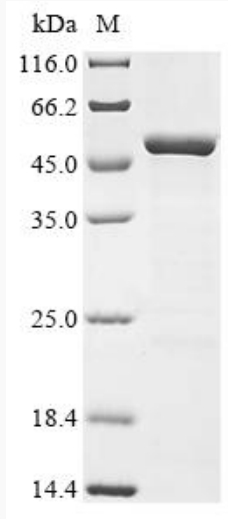
Protein Refseq [NP_446453](#)

 Tel: 1-631-559-9269 1-516-512-3133

 Email: info@creative-biomart.com  Fax: 1-631-938-8127

 45-1 Ramsey Road, Shirley, NY 11967, USA

SDS-PAGE



 Tel: 1-631-559-9269 1-516-512-3133

 Email: info@creative-biomart.com  Fax: 1-631-938-8127

 45-1 Ramsey Road, Shirley, NY 11967, USA