

Recombinant Mouse Scgb1a1 protein

Cat. No. Scgb1a1-1396M **Lot. No.** (See product label)

SPECIFICATION

Product Overview	Recombinant Mouse Scgb1a1 protein was expressed in Escherichia coli.
Species	Mouse
Source	E.coli
ProteinLength	75
Description	This gene encodes a member of the secretoglobin family of small secreted proteins. The encoded protein has been implicated in numerous functions including anti-inflammation, inhibition of phospholipase A2 and the sequestering of hydrophobic ligands. Defects in this gene are associated with a susceptibility to asthma.
Form	Lyophilized from a 0.2µm filtered concentrated solution in PBS, pH 7.4.
Bio-activity	Fully biologically active when compared to standard. The ED50 as determined by the ability of the immobilized protein to support the adhesion of the A549 human lung carcinoma cells is less than 5.0 µg/ml, corresponding to a specific activity of > 200 IU/mg.
Molecular Mass	Approximately 16.7 kDa, a disulfide-linked homodimeric protein containing two 75 amino acid residues polypeptide.
AA Sequence	DICPGFLQVLEALLMESESGYVASLKPFPNGSDLQNAGTQLKRLVDTLPQETRINIMK LTEKILTSPLCKQDLRF

 Tel: 1-631-559-9269 1-516-512-3133

 Email: info@creative-biomart.com  Fax: 1-631-938-8127

 45-1 Ramsey Road, Shirley, NY 11967, USA

Endotoxin	Less than 0.1 EU/g of rMuUteroglobin as determined by LAL method.
Purity	>98% by SDS-PAGE and HPLC analysis.
Storage	Use a manual defrost freezer and avoid repeated freeze-thaw cycles. 12 months from date of receipt, -20 to -70 centigrade as supplied. 1 month, 2 to 8 centigrade under sterile conditions after reconstitution. 3 months, -20 to -70 centigrade under sterile conditions after reconstitution.
Reconstitution	We recommend that this vial be briefly centrifuged prior to opening to bring the contents to the bottom. Reconstitute in sterile distilled water or aqueous buffer containing 0.1 % BSA to a concentration of 0.1-1.0 mg/mL. Stock solutions should be apportioned into working aliquots and stored at ≤-20 centigrade. Further dilutions should be made in appropriate buffered solutions.

GENE INFORMATION

Gene Name	Scgb1a1
Official Symbol	Scgb1a1
Synonyms	SCGB1A1; secretoglobin, family 1A, member 1 (uteroglobin); uteroglobin; CCPBP; Blastokinin; PCB-binding protein; clara cell 17 kDa protein; clara cell secretory protein; secretoglobin family 1A member 1; clara cells 10 kDa secretory protein; clara cell phospholipid-binding protein; UG; UGB; Utg; CC10; CC16; CCSP; PCB-BP;
Gene ID	22287
mRNA Refseq	NM_011681
Protein Refseq	NP_035811

 Tel: 1-631-559-9269 1-516-512-3133

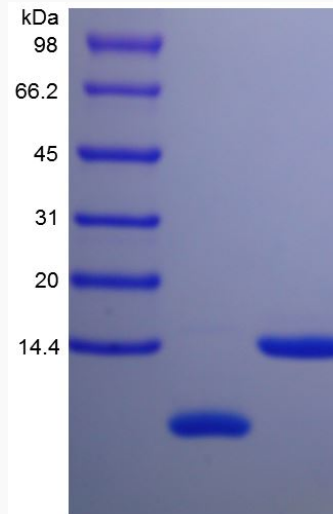
 Email: info@creative-biomart.com  Fax: 1-631-938-8127

 45-1 Ramsey Road, Shirley, NY 11967, USA

UniProt ID

Q06318

SDS-PAGE of
Scgb1a1-1396M



 Tel: 1-631-559-9269 1-516-512-3133

 Email: info@creative-biomart.com  Fax: 1-631-938-8127

 45-1 Ramsey Road, Shirley, NY 11967, USA