

Recombinant Rat Scgb1a1 protein, His-tagged

Cat. No. Scgb1a1-7839R **Lot. No.** (See product label)

SPECIFICATION

Product Overview	Recombinant Rat Scgb1a1 aa. (Asp22~Val96 (Accession # P17559)) fused with N-terminal His tag was produced in E. coli cells.
Species	Rat
Source	E.coli
ProteinLength	Asp22~Val96
Description	Binds polychlorinated biphenyls.
Form	Freeze-dried powder
Molecular Mass	Predicted Molecular Mass: 9.8kDa
Endotoxin	<1.0EU per 1g (determined by the LAL method)
Purity	>95%
Characteristic	The isoelectric point is 5.8.
Applications	SDS-PAGE; WB; ELISA; IP
Stability	The thermal stability is described by the loss rate. The loss rate was determined by accelerated thermal degradation test, that is, incubate the protein at 37°C for 48h,

 Tel: 1-631-559-9269 1-516-512-3133

 Email: info@creative-biomart.com  Fax: 1-631-938-8127

 45-1 Ramsey Road, Shirley, NY 11967, USA

and no obvious degradation and precipitation were observed. The loss rate is less than 5% within the expiration date under appropriate storage condition.

Storage

Avoid repeated freeze/thaw cycles. Store at 2-8°C for one month. Aliquot and store at -80°C for 12 months.

Storage buffer

Supplied as lyophilized form in PBS, pH7.4, containing 5% trehalose, 0.01% sarcosyl

Reconstitution

Reconstitute in sterile PBS, pH7.2-pH7.4.

GENE INFORMATION

Gene Name

Scgb1a1 secretoglobin family 1A member 1 [*Rattus norvegicus* (Norway rat)]

Official Symbol

Scgb1a1

Synonyms

Scgb1a1; secretoglobin family 1A member 1; Ugb; CC10; CCSP; PCB; uteroglobin; CCPBP; PCB-binding protein; Uteroglobin (Clara cell secretory protein); clara cell phospholipid-binding protein; clara cells 10 kDa secretory protein; secretoglobin, family 1A, member 1 (uteroglobin)

Gene ID

25575

mRNA Refseq


NM_013051.1

Protein Refseq


NP_037183.1

UniProt ID

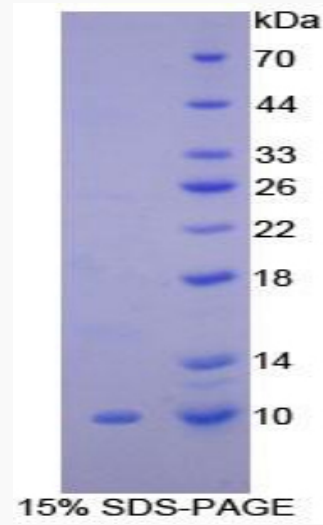
P17559

 Tel: 1-631-559-9269 1-516-512-3133

 Email: info@creative-biomart.com  Fax: 1-631-938-8127

 45-1 Ramsey Road, Shirley, NY 11967, USA

SDS-PAGE



 Tel: 1-631-559-9269 1-516-512-3133

 Email: info@creative-biomart.com  Fax: 1-631-938-8127

 45-1 Ramsey Road, Shirley, NY 11967, USA