

Recombinant Mouse Sdc1 Protein, His-tagged

Cat. No. Sdc1-278M Lot. No. (See product label)

SPECIFICATION

| | |
|-------------------------|--|
| Product Overview | Recombinant protein from the full-length sequence of Mus musculus syndecan 1(Sdc1)(NM_011519), with a polyhistidine tag, was expressed in mammalian cells. |
| Species | Mouse |
| Source | Mammalian Cells |
| Form | Purified protein formulated in a sterile solution of PBS buffer, pH7.2, without any preservatives |
| Molecular Mass | 36 kDa |
| Endotoxin | Endotoxin level is < 0.1 ng/g of protein (<1EU /g) |
| Purity | >90% by SDS-PAGE gel and Coomassie Blue staining |
| Applications | Antigens, Western, ELISA and other in vitro binding or in vivo functional assays, and protein-protein interaction studies. |

GENE INFORMATION

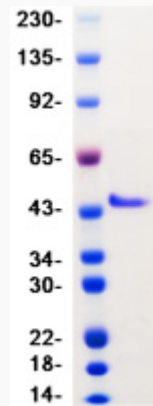
| | |
|------------------------|----------------------------------|
| Gene Name | Sdc1 syndecan 1 [Mus musculus] |
| Official Symbol | Sdc1 |

 Tel: 1-631-559-9269 1-516-512-3133


 Email: info@creative-biomart.com  Fax: 1-631-938-8127

 45-1 Ramsey Road, Shirley, NY 11967, USA

| | |
|-----------------------|---|
| Synonyms | SDC1; syndecan 1; syndecan-1; synstatin; Sstn; Synd; CD138; Synd1; syn-1; AA408134; AA409076; |
| Gene ID | 20969 |
| mRNA Refseq | NM_011519 |
| Protein Refseq | NP_035649 |



SDS-PAGE

 Tel: 1-631-559-9269 1-516-512-3133

 Email: info@creative-biomart.com  Fax: 1-631-938-8127

 45-1 Ramsey Road, Shirley, NY 11967, USA