

Recombinant Mouse Sdc2 Protein, His-tagged

Cat. No. Sdc2-2766M **Lot. No.** (See product label)

SPECIFICATION

Product Overview	Recombinant Mouse Sdc2 Protein (Glu19-Glu145) with N-His tag was expressed in E. coli.
Species	Mouse
Source	E.coli
ProteinLength	Glu19-Glu145
Description	Predicted to enable PDZ domain binding activity and identical protein binding activity. Involved in regulation of dendrite morphogenesis. Predicted to be located in neuronal cell body and synapse. Predicted to be active in cell surface. Is expressed in several structures, including cranium; embryo mesenchyme; genitourinary system; jaw; and retina. Human ortholog(s) of this gene implicated in cleft lip and cleft palate. Orthologous to human SDC2 (syndecan 2).
Form	Freeze-dried powder
Molecular Mass	Predicted Molecular Mass: 34.3 kDa Accurate Molecular Mass: \
Purity	> 90%
Applications	Positive Control; Immunogen; SDS-PAGE; WB.

 Tel: 1-631-559-9269 1-516-512-3133

 Email: info@creative-biomart.com  Fax: 1-631-938-8127

 45-1 Ramsey Road, Shirley, NY 11967, USA

Stability	The thermal stability is described by the loss rate. The loss rate was determined by accelerated thermal degradation test, that is, incubate the protein at 37 centigrade for 48h, and no obvious degradation and precipitation were observed. The loss rate is less than 5% within the expiration date under appropriate storage condition.
Storage	Avoid repeated freeze/thaw cycles. Store at 2-8 centigrade for one month. Aliquot and store at -80 centigrade for 12 months.
Storage Buffer	20mM Tris, 150mM NaCl, pH8.0, containing 1mM EDTA, 1mM DTT, 0.01% SKL, 5% Trehalose and Proclin300.
Reconstitution	Reconstitute in 20mM Tris, 150mM NaCl (pH8.0) to a concentration of 0.1-1.0 mg/mL. Do not vortex.

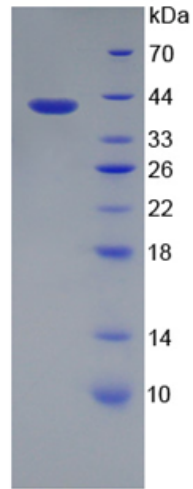
GENE INFORMATION

Gene Name	Sdc2 syndecan 2 [Mus musculus (house mouse)]
Official Symbol	Sdc2
Synonyms	Sdc2; syndecan 2; Hspg1; Synd2; AA960457; syndecan-2; 4833414L08Rik; syndecan-2; HSPG; fibroglycan; heparan sulfate proteoglycan 1, cell surface-associated (fibroglycan); heparan sulfate proteoglycan core protein
Gene ID	15529
mRNA Refseq	NM_008304
Protein Refseq	NP_032330
UniProt ID	P43407

 Tel: 1-631-559-9269 1-516-512-3133

 Email: info@creative-biomart.com  Fax: 1-631-938-8127

 45-1 Ramsey Road, Shirley, NY 11967, USA



Tel: 1-631-559-9269 1-516-512-3133

Email: info@creative-biomart.com Fax: 1-631-938-8127

45-1 Ramsey Road, Shirley, NY 11967, USA