

## Recombinant Mouse Sdc4 Protein (Glu24-Glu145), C-His tagged

**Cat. No.** Sdc4-6794M    **Lot. No.** (See product label)

### SPECIFICATION

<b>Product Overview</b>	Recombinant mouse Sdc4 (Glu24-Glu145) fused with the C-terminal His tag was expressed in mammalian cells.
<b>Species</b>	Mouse
<b>Source</b>	Mammalian Cells
<b>ProteinLength</b>	Glu24-Glu145
<b>Description</b>	Predicted to enable several functions, including fibronectin binding activity; protein kinase C binding activity; and thrombospondin receptor activity. Involved in regulation of fibroblast migration. Acts upstream of or within inner ear receptor cell stereocilium organization; neural tube closure; and wound healing. Located in cell surface. Is expressed in several structures, including alimentary system; brain; genitourinary system; skeleton; and skin. Orthologous to human SDC4 (syndecan 4).
<b>Form</b>	Lyophilized powder/frozen liquid
<b>Molecular Mass</b>	13.42 kDa
<b>Purity</b>	> 90 % as determined by SDS-PAGE
<b>Notes</b>	For research use only.

 Tel: 1-631-559-9269    1-516-512-3133

 Email: [info@creative-biomart.com](mailto:info@creative-biomart.com)     Fax: 1-631-938-8127

 45-1 Ramsey Road, Shirley, NY 11967, USA

<b>Storage</b>	Use a manual defrost freezer and avoid repeated freeze thaw cycles. Store at 2 to 8 centigrade for one week. Store at -20 to -80 centigrade for twelve months from the date of receipt.
<b>Storage Buffer</b>	Supplied as solution form in PBS or lyophilized from PBS.
<b>Reconstitution</b>	Reconstitute in sterile water for a stock solution.
<b>Shipping</b>	They are shipped out with dry ice/blue ice unless customers require otherwise.

## GENE INFORMATION

<b>Gene Name</b>	<a href="#">Sdc4 syndecan 4 [ Mus musculus (house mouse) ]</a>
<b>Official Symbol</b>	<a href="#">Sdc4</a>
<b>Synonyms</b>	SDC4; syndecan 4; syndecan 4 (amphiglycan, ryudocan); syndecan-4; amphiglycan; ryudocan; SYND4; syndecan proteoglycan 4; ryudocan amphiglycan; ryudocan core protein; MGC22217;
<b>Gene ID</b>	<a href="#">20971</a>
<b>mRNA Refseq</b>	<a href="#">NM_011521</a>
<b>Protein Refseq</b>	<a href="#">NP_035651</a>
<b>UniProt ID</b>	<a href="#">O35988</a>

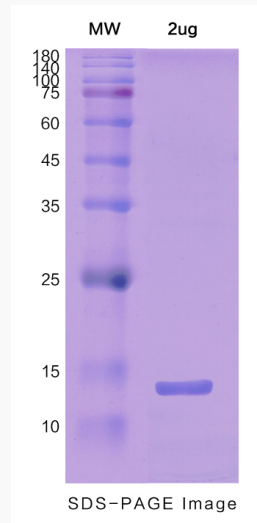
 Tel: 1-631-559-9269 1-516-512-3133

 Email: [info@creative-biomart.com](mailto:info@creative-biomart.com)  Fax: 1-631-938-8127

 45-1 Ramsey Road, Shirley, NY 11967, USA



**SDS-PAGE**



Tel: 1-631-559-9269 1-516-512-3133

Email: [info@creative-biomart.com](mailto:info@creative-biomart.com) Fax: 1-631-938-8127

45-1 Ramsey Road, Shirley, NY 11967, USA