

## Recombinant Rat Sdf4 protein, His-tagged

Cat. No. Sdf4-721R Lot. No. (See product label)

### SPECIFICATION

<b>Product Overview</b>	Recombinant Rat Sdf4 aa. (Val184~Phe382 (Accession # Q91ZS3)) fused with N-terminal His tag was produced in E. coli cells.
<b>Species</b>	Rat
<b>Source</b>	E.coli
<b>ProteinLength</b>	Val184~Phe382
<b>Description</b>	MRNA expression increases in response to ethanol.
<b>Form</b>	Freeze-dried powder
<b>Molecular Mass</b>	Predicted Molecular Mass: 24.8kDa
<b>Endotoxin</b>	<1.0EU per 1g (determined by the LAL method)
<b>Purity</b>	>95%
<b>Characteristic</b>	The isoelectric point is 4.7.
<b>Applications</b>	SDS-PAGE; WB; ELISA; IP
<b>Stability</b>	The thermal stability is described by the loss rate. The loss rate was determined by accelerated thermal degradation test, that is, incubate the protein at 37°C for 48h,

 Tel: 1-631-559-9269 1-516-512-3133

 Email: [info@creative-biomart.com](mailto:info@creative-biomart.com)  Fax: 1-631-938-8127

 45-1 Ramsey Road, Shirley, NY 11967, USA

and no obvious degradation and precipitation were observed. The loss rate is less than 5% within the expiration date under appropriate storage condition.

**Storage**

Avoid repeated freeze/thaw cycles. Store at 2-8°C for one month. Aliquot and store at -80°C for 12 months.

**Storage buffer**

Supplied as lyophilized form in PBS, pH7.4, containing 5% trehalose, 0.01% sarcosyl.

**Reconstitution**

Reconstitute in sterile PBS, pH7.2-pH7.4.

**GENE INFORMATION****Gene Name**

Sdf4 stromal cell derived factor 4 [ *Rattus norvegicus* (Norway rat) ]

**Official Symbol**

Sdf4

**Synonyms**

Sdf4; stromal cell derived factor 4; 45 kDa calcium-binding protein; SDF-4; cab45

**Gene ID**

155173

**mRNA Refseq**

NM\_130412.2

**Protein Refseq**

NP\_569096.2

**UniProt ID**

Q91ZS3

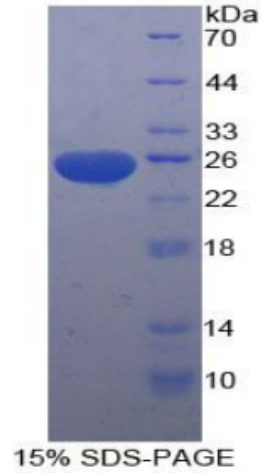
 Tel: 1-631-559-9269 1-516-512-3133

 Email: [info@creative-biomart.com](mailto:info@creative-biomart.com)  Fax: 1-631-938-8127

 45-1 Ramsey Road, Shirley, NY 11967, USA



SDS-PAGE



Tel: 1-631-559-9269 1-516-512-3133

Email: [info@creative-biomart.com](mailto:info@creative-biomart.com) Fax: 1-631-938-8127

45-1 Ramsey Road, Shirley, NY 11967, USA