

## Recombinant Mouse Sdha protein, His & T7-tagged

Cat. No. Sdha-1714M    Lot. No. (See product label)

### SPECIFICATION

<b>Product Overview</b>	Recombinant Mouse Sdha aa. (Val4~Ile300 (Accession # Q8K2B3)) fused with N-terminal His & T7 tag was produced in E. coli cells.
<b>Species</b>	Mouse
<b>Source</b>	E.coli
<b>ProteinLength</b>	Val4~Ile300
<b>Form</b>	Freeze-dried powder
<b>Molecular Mass</b>	Predicted Molecular Mass: 35.9kDa
<b>Endotoxin</b>	<1.0EU per 1ug (determined by the LAL method)
<b>Purity</b>	>95%
<b>Applications</b>	SDS-PAGE; WB; ELISA; IP.
<b>Stability</b>	The thermal stability is described by the loss rate. The loss rate was determined by accelerated thermal degradation test, that is, incubate the protein at 37°C for 48h, and no obvious degradation and precipitation were observed. The loss rate is less than 5% within the expiration date under appropriate storage condition.
<b>Storage</b>	Avoid repeated freeze/thaw cycles. Store at 2-8°C for one month. Aliquot and store at

 Tel: 1-631-559-9269    1-516-512-3133

 Email: [info@creative-biomart.com](mailto:info@creative-biomart.com)     Fax: 1-631-938-8127

 45-1 Ramsey Road, Shirley, NY 11967, USA

-80°C for 12 months.

**Storage buffer**

Supplied as lyophilized form in 20mM Tris, 500mM NaCl, pH8.0, containing 1mM EDTA, 1mM DTT, 0.01% sarcosyl, 5% trehalose, and preservative.

**Reconstitution**

Reconstitute in ddH<sub>2</sub>O.

**Isoelectric Point**

6.9

## GENE INFORMATION

**Gene Name**

[Sdha succinate dehydrogenase complex, subunit A, flavoprotein \(Fp\) \[ Mus musculus \(house mouse\) \]](#)

**Official Symbol**

[Sdha](#)

**Synonyms**

Sdha; succinate dehydrogenase complex, subunit A, flavoprotein (Fp); FP; SDH2; SDHF; C81073; 4921513A11; 1500032O14Rik; 2310034D06Rik; succinate dehydrogenase [ubiquinone] flavoprotein subunit, mitochondrial; flavoprotein subunit of complex II

**Gene ID**

[66945](#)

**mRNA Refseq**

[NM\\_023281.1](#)

**Protein Refseq**

[NP\\_075770.1](#)

**UniProt ID**

[Q8K2B3](#)

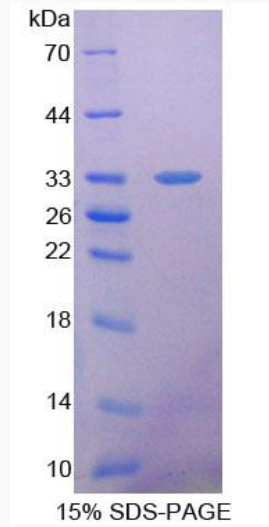
 Tel: 1-631-559-9269 1-516-512-3133

 Email: [info@creative-biomart.com](mailto:info@creative-biomart.com)  Fax: 1-631-938-8127

 45-1 Ramsey Road, Shirley, NY 11967, USA



SDS-PAGE



Tel: 1-631-559-9269 1-516-512-3133

Email: [info@creative-biomart.com](mailto:info@creative-biomart.com) Fax: 1-631-938-8127

45-1 Ramsey Road, Shirley, NY 11967, USA