

Recombinant Mouse Sdhb protein, His & T7-tagged

Cat. No. Sdhb-1710M Lot. No. (See product label)

SPECIFICATION

Product Overview	Recombinant Mouse Sdhb aa. (Glu97~Ala282 (Accession # Q9CQA3)) fused with N-terminal His & T7 tag was produced in E. coli cells.
Species	Mouse
Source	E.coli
ProteinLength	Glu97~Ala282
Form	Freeze-dried powder
Molecular Mass	Predicted Molecular Mass: 25.0kDa
Endotoxin	<1.0EU per 1ug (determined by the LAL method)
Purity	>90%
Applications	SDS-PAGE; WB; ELISA; IP.
Stability	The thermal stability is described by the loss rate. The loss rate was determined by accelerated thermal degradation test, that is, incubate the protein at 37°C for 48h, and no obvious degradation and precipitation were observed. The loss rate is less than 5% within the expiration date under appropriate storage condition.
Storage	Avoid repeated freeze/thaw cycles. Store at 2-8°C for one month. Aliquot and store at

 Tel: 1-631-559-9269 1-516-512-3133

 Email: info@creative-biomart.com  Fax: 1-631-938-8127

 45-1 Ramsey Road, Shirley, NY 11967, USA

-80°C for 12 months.

Storage buffer Supplied as lyophilized form in PBS, pH7.4, containing 5% trehalose, 0.01% sarcosyl.

Reconstitution Reconstitute in sterile PBS, pH7.2-pH7.4.

Isoelectric Point 8

GENE INFORMATION

Gene Name [Sdhb succinate dehydrogenase complex, subunit B, iron sulfur \(Ip\) \[Mus musculus \(house mouse\) \]](#)

Official Symbol [Sdhb](#)

Synonyms Sdhb; succinate dehydrogenase complex, subunit B, iron sulfur (Ip); 0710008N11Rik; succinate dehydrogenase [ubiquinone] iron-sulfur subunit, mitochondrial; ip; iron-sulfur subunit of complex II; succinate dehydrogenase complex subunit B

Gene ID [67680](#)

mRNA Refseq [NM_023374.4](#)

Protein Refseq [NP_075863.2](#)

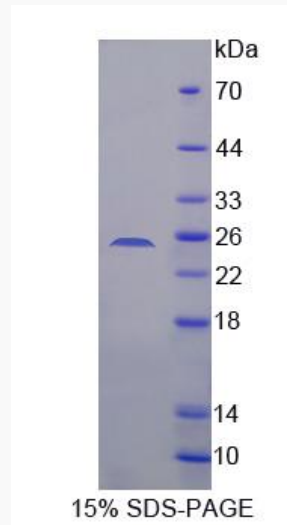
UniProt ID [Q9CQA3](#)

 Tel: 1-631-559-9269 1-516-512-3133

 Email: info@creative-biomart.com  Fax: 1-631-938-8127

 45-1 Ramsey Road, Shirley, NY 11967, USA

SDS-PAGE



 Tel: 1-631-559-9269 1-516-512-3133

 Email: info@creative-biomart.com  Fax: 1-631-938-8127

 45-1 Ramsey Road, Shirley, NY 11967, USA