

Recombinant Mouse Sele Protein, His-tagged

Cat. No. Sele-2048M **Lot. No.** (See product label)

SPECIFICATION

Product Overview	Recombinant Mouse Sele Protein (Trp22-Leu371) with N-His tag was expressed in E. coli.
Species	Mouse
Source	E.coli
ProteinLength	Trp22-Leu371
Description	Predicted to enable several functions, including oligosaccharide binding activity; phospholipase binding activity; and sialic acid binding activity. Involved in positive regulation of leukocyte tethering or rolling. Acts upstream of or within positive regulation of leukocyte migration. Predicted to be located in several cellular components, including caveola; clathrin-coated pit; and perinuclear region of cytoplasm. Predicted to be integral component of plasma membrane. Predicted to be active in external side of plasma membrane and extracellular space. Is expressed in several structures, including adrenal gland; genitourinary system; incisor; integumental system; and limb segment. Human ortholog(s) of this gene implicated in IgA glomerulonephritis; brain ischemia; cerebrovascular disease; and coronary artery disease. Orthologous to human SELE (selectin E).
Form	Freeze-dried powder
Molecular Mass	Predicted Molecular Mass: 68.7 kDa Accurate Molecular Mass: 69 kDa

 Tel: 1-631-559-9269 1-516-512-3133

 Email: info@creative-biomart.com  Fax: 1-631-938-8127

 45-1 Ramsey Road, Shirley, NY 11967, USA

Purity	> 97%
Applications	Positive Control; Immunogen; SDS-PAGE; WB.
Stability	The thermal stability is described by the loss rate. The loss rate was determined by accelerated thermal degradation test, that is, incubate the protein at 37 centigrade for 48h, and no obvious degradation and precipitation were observed. The loss rate is less than 5% within the expiration date under appropriate storage condition.
Storage	Avoid repeated freeze/thaw cycles. Store at 2-8 centigrade for one month. Aliquot and store at -80 centigrade for 12 months.
Storage Buffer	PBS, pH7.4, containing 0.01% SKL, 1mM DTT, 5% Trehalose and Proclin300.
Reconstitution	Reconstitute in 20mM Tris, 150mM NaCl (pH8.0) to a concentration of 0.1-1.0 mg/mL. Do not vortex.

GENE INFORMATION

Gene Name	Sele selectin, endothelial cell [Mus musculus (house mouse)]
Official Symbol	Sele
Synonyms	SELE; selectin, endothelial cell; E-selectin; ELAM-1; LECAM2; CD62 antigen-like family member E; endothelial leukocyte adhesion molecule 1; leukocyte-endothelial cell adhesion molecule 2; Elam; CD62E;
Gene ID	20339
mRNA Refseq	NM_011345

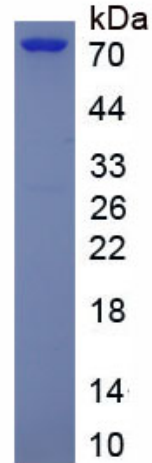
 Tel: 1-631-559-9269 1-516-512-3133

 Email: info@creative-biomart.com  Fax: 1-631-938-8127

 45-1 Ramsey Road, Shirley, NY 11967, USA

Protein Refseq NP_035475

UniProt ID Q00690



 Tel: 1-631-559-9269 1-516-512-3133

 Email: info@creative-biomart.com  Fax: 1-631-938-8127

 45-1 Ramsey Road, Shirley, NY 11967, USA