

Recombinant Mouse Sele protein, His-tagged

Cat. No. Sele-860M **Lot. No.** (See product label)

SPECIFICATION

Product Overview	Recombinant Mouse Sele protein(Q00690)(Trp22-Pro557), fused with C-terminal His tag, was expressed in HEK293.
Species	Mouse
Source	HEK293
ProteinLength	Trp22-Pro557
Tag	C-His
Form	Supplied as 0.22µm filtered solution in PBS (pH 7.4).
Molecular Mass	The protein has a predicted MW of 59.6 kDa. Due to glycosylation, the protein migrates to 70-110 kDa based on Tris-Bis PAGE result.
Endotoxin	Less than 1EU per µg by the LAL method.
Purity	> 95% as determined by Tris-Bis PAGE;> 95% as determined by HPLC
Storage	Valid for 12 months from date of receipt when stored at -80°C. Recommend to aliquot the protein into smaller quantities for optimal storage. Please do not repeated freeze-thaw cycles.
Reconstitution	It is recommended that sterile water be added to the vial to prepare a stock solution of

 Tel: 1-631-559-9269 1-516-512-3133

 Email: info@creative-biomart.com  Fax: 1-631-938-8127

 45-1 Ramsey Road, Shirley, NY 11967, USA

0.2 ug/ul. Centrifuge the vial at 4°C before opening to recover the entire contents.

GENE INFORMATION

Gene Name Sele selectin, endothelial cell [*Mus musculus*]

Official Symbol Sele

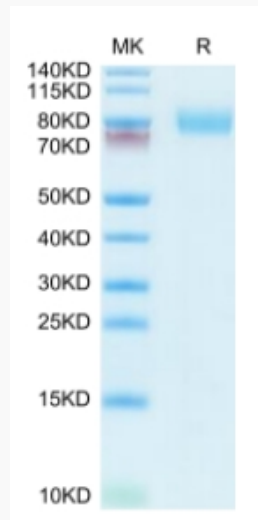
Synonyms SELE; selectin, endothelial cell; E-selectin; ELAM-1; LECAM2; CD62 antigen-like family member E; endothelial leukocyte adhesion molecule 1; leukocyte-endothelial cell adhesion molecule 2; Elam; CD62E;

Gene ID 20339

mRNA Refseq NM_011345

Protein Refseq NP_035475

Tris-Bis PAGE



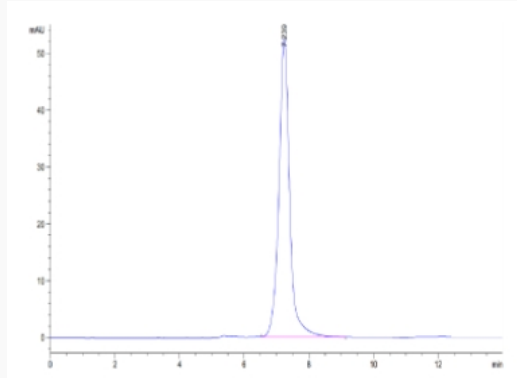
Tel: 1-631-559-9269 1-516-512-3133

Email: info@creative-biomart.com Fax: 1-631-938-8127

45-1 Ramsey Road, Shirley, NY 11967, USA



SEC-HPLC



Tel: 1-631-559-9269 1-516-512-3133

Email: info@creative-biomart.com Fax: 1-631-938-8127

45-1 Ramsey Road, Shirley, NY 11967, USA