

Recombinant Mouse Sell Protein (Trp39-Asn332), C-His tagged

Cat. No. Sell-6796M Lot. No. (See product label)

SPECIFICATION

Product Overview	Recombinant mouse Sell (Trp39-Asn332) fused with the C-terminal His tag was expressed in mammalian cells.
Species	Mouse
Source	Mammalian Cells
ProteinLength	Trp39-Asn332
Description	Enables cell adhesion molecule binding activity. Acts upstream of or within response to ATP. Located in external side of plasma membrane. Is expressed in brain; brainstem; submandibular gland epithelium; and testis. Used to study type 1 diabetes mellitus. Human ortholog (s) of this gene implicated in Crohn's disease; IgA glomerulonephritis; and ulcerative colitis. Orthologous to human SELL (selectin L).
Form	Lyophilized powder/frozen liquid
Molecular Mass	32.34 kDa
Purity	> 90 % as determined by SDS-PAGE
Notes	For research use only.
Storage	Use a manual defrost freezer and avoid repeated freeze thaw cycles. Store at 2 to 8 centigrade for one week. Store at -20 to -80 centigrade for twelve months from the

 Tel: 1-631-559-9269 1-516-512-3133

 Email: info@creative-biomart.com  Fax: 1-631-938-8127

 45-1 Ramsey Road, Shirley, NY 11967, USA

date of receipt.

Storage Buffer Supplied as solution form in PBS or lyophilized from PBS.

Reconstitution Reconstitute in sterile water for a stock solution.

Shipping They are shipped out with dry ice/blue ice unless customers require otherwise.

GENE INFORMATION

Gene Name Sell selectin, lymphocyte [*Mus musculus* (house mouse)]

Official Symbol Sell

Synonyms Sell; selectin, lymphocyte; Lnhr; CD62L; LAM-1; Ly-22; Lyam1; LECAM1; Ly-m22; Lyam-1; LECAM-1; L-selectin; L-selectin; CD62 antigen-like family member L; leukocyte adhesion molecule 1; leukocyte-endothelial cell adhesion molecule 1; lymph node homing receptor; lymphocyte antigen 22; lymphocyte surface MEL-14 antigen

Gene ID 20343

mRNA Refseq NM_011346

Protein Refseq NP_035476

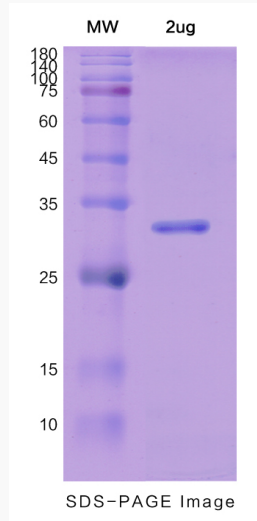
UniProt ID P18337

 Tel: 1-631-559-9269 1-516-512-3133

 Email: info@creative-biomart.com  Fax: 1-631-938-8127

 45-1 Ramsey Road, Shirley, NY 11967, USA

SDS-PAGE



 Tel: 1-631-559-9269 1-516-512-3133

 Email: info@creative-biomart.com  Fax: 1-631-938-8127

 45-1 Ramsey Road, Shirley, NY 11967, USA