

Recombinant Mouse Sell protein, His & GST-tagged

Cat. No. Sell-681M Lot. No. (See product label)

SPECIFICATION

Product Overview	Recombinant Mouse Sell aa. (Val101~Thr343 (Accession# P18337)) fused with N-terminal His & GST tag was produced in E. coli cells.
Species	Mouse
Source	E.coli
ProteinLength	Val101~Thr343
Form	Freeze-dried powder
Molecular Mass	Predicted Molecular Mass: 56.4kDa
Endotoxin	<1.0EU per 1g (determined by the LAL method)
Purity	>95%
Characteristic	The isoelectric point is 4.8.
Applications	SDS-PAGE; WB; ELISA; IP.
Stability	The thermal stability is described by the loss rate. The loss rate was determined by accelerated thermal degradation test, that is, incubate the protein at 37°C for 48h, and no obvious degradation and precipitation were observed. The loss rate is less than 5% within the expiration date under appropriate storage condition.

 Tel: 1-631-559-9269 1-516-512-3133

 Email: info@creative-biomart.com  Fax: 1-631-938-8127

 45-1 Ramsey Road, Shirley, NY 11967, USA

Storage	Avoid repeated freeze/thaw cycles. Store at 2-8°C for one month. Aliquot and store at -80°C for 12 months.
Storage buffer	Supplied as lyophilized form in PBS, pH 7.4, containing 5% sucrose, 0.01% sarcosyl.
Reconstitution	Reconstitute in sterile PBS, pH7.2-pH7.4.

GENE INFORMATION

Gene Name	Sell selectin, lymphocyte [<i>Mus musculus</i> (house mouse)]
Official Symbol	Sell
Synonyms	Lnhr; CD62L; Ly-22; Lyam1; Ly-m22; Lyam-1; LECAM-1; AI528707; L-selectin; CD62 antigen-like family member L; LAM-1; LECAM1; leukocyte adhesion molecule 1; leukocyte-endothelial cell adhesion molecule 1; lymph node homing receptor; lymphocyte antigen 22; lymphocyte surface MEL-14 antigen
Gene ID	20343
mRNA Refseq	NM_001164059.1
Protein Refseq	NP_001157531.1
UniProt ID	P18337

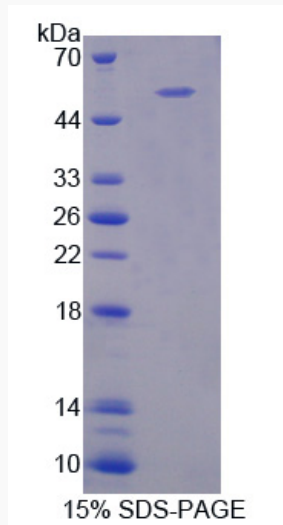
 Tel: 1-631-559-9269 1-516-512-3133

 Email: info@creative-biomart.com  Fax: 1-631-938-8127

 45-1 Ramsey Road, Shirley, NY 11967, USA



SDS-PAGE



Tel: 1-631-559-9269 1-516-512-3133

Email: info@creative-biomart.com Fax: 1-631-938-8127

45-1 Ramsey Road, Shirley, NY 11967, USA