

## Recombinant Rat Sell protein, His-tagged

Cat. No. Sell-682R Lot. No. (See product label)

### SPECIFICATION

<b>Product Overview</b>	Recombinant Rat Sell aa. (Ile94~Asn332 (Accession # P30836)) fused with N-terminal His tag was produced in E. coli cells.
<b>Species</b>	Rat
<b>Source</b>	E.coli
<b>ProteinLength</b>	Ile94~Asn332
<b>Form</b>	Freeze-dried powder
<b>Molecular Mass</b>	Predicted Molecular Mass: 28.0kDa
<b>Endotoxin</b>	<1.0EU per 1g (determined by the LAL method)
<b>Purity</b>	>95%
<b>Characteristic</b>	The isoelectric point is 5.9.
<b>Applications</b>	SDS-PAGE; WB; ELISA; IP.
<b>Stability</b>	The thermal stability is described by the loss rate. The loss rate was determined by accelerated thermal degradation test, that is, incubate the protein at 37°C for 48h, and no obvious degradation and precipitation were observed. The loss rate is less than 5% within the expiration date under appropriate storage condition.

 Tel: 1-631-559-9269 1-516-512-3133

 Email: [info@creative-biomart.com](mailto:info@creative-biomart.com)  Fax: 1-631-938-8127

 45-1 Ramsey Road, Shirley, NY 11967, USA

<b>Storage</b>	Avoid repeated freeze/thaw cycles. Store at 2-8°C for one month. Aliquot and store at -80°C for 12 months.
<b>Storage buffer</b>	Supplied as lyophilized form in PBS, pH 7.4, containing 5% sucrose, 0.01% sarcosyl.
<b>Reconstitution</b>	Reconstitute in sterile PBS, pH7.2-pH7.4.

## GENE INFORMATION

<b>Gene Name</b>	Sell selectin L [ <i>Rattus norvegicus</i> (Norway rat) ]
<b>Official Symbol</b>	Sell
<b>Synonyms</b>	A.11; LECAM-1; L-selectin; CD62 antigen-like family member L; LAM-1; LECAM1; leukocyte adhesion molecule 1; leukocyte-endothelial cell adhesion molecule 1; ly-22; lymph node homing receptor; lymphocyte antigen 22; lymphocyte surface MEL-14 antigen; selectin, lymphocyte; L-selectin
<b>Gene ID</b>	<a href="#">29259</a>
<b>mRNA Refseq</b>	<a href="#">NM_019177.3</a>
<b>Protein Refseq</b>	<a href="#">NP_062050.3</a>
<b>UniProt ID</b>	<a href="#">P30836</a>

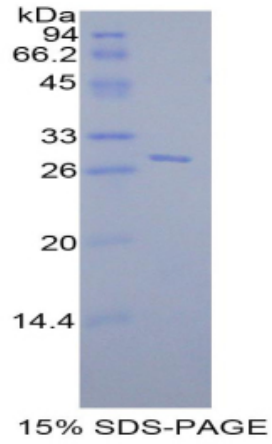
 Tel: 1-631-559-9269 1-516-512-3133

 Email: [info@creative-biomart.com](mailto:info@creative-biomart.com)  Fax: 1-631-938-8127

 45-1 Ramsey Road, Shirley, NY 11967, USA



SDS-PAGE



Tel: 1-631-559-9269 1-516-512-3133

Email: [info@creative-biomart.com](mailto:info@creative-biomart.com) Fax: 1-631-938-8127

45-1 Ramsey Road, Shirley, NY 11967, USA