

Recombinant Mouse Selp1g protein, His/GST-tagged

Cat. No. Selp1g-125M Lot. No. (See product label)

SPECIFICATION

Product Overview	Recombinant Mouse Selp1g(Ser94~Ser345) fused with His/GST tag at N-terminal was expressed in E. coli.
Species	Mouse
Source	E.coli
ProteinLength	Ser94~Ser345
Description	Selp1g played an important role in many functions.
Form	PBS, pH7.4, containing 0.01% SKL, 1mM DTT, 5% Trehalose and Proclin300.
Molecular Mass	58.4kDa
Endotoxin	<1.0EU per 1g (determined by the LAL method)
Purity	> 95%
Applications	Positive Control; Immunogen; SDS-PAGE; WB. If bio-activity of the protein is needed, please check active protein
Stability	The thermal stability is described by the loss rate. The loss rate was determined by accelerated thermal degradation test, that is, incubate the protein at 37 centigrade for 48h, and no obvious degradation and precipitation were observed. The loss rate is

 Tel: 1-631-559-9269 1-516-512-3133

 Email: info@creative-biomart.com  Fax: 1-631-938-8127

 45-1 Ramsey Road, Shirley, NY 11967, USA

less than 5% within the expiration date under appropriate storage condition.

Storage

Avoid repeated freeze/thaw cycles. Store at 2-8 centigrade for one month. Aliquot and store at -80 centigrade for 12 months.

Reconstitution

Reconstitute in PBS or others.

GENE INFORMATION

Gene Name

Selp1g selectin, platelet (p-selectin) ligand [*Mus musculus*]

Official Symbol

Selp1g

Synonyms

SELPLG; selectin, platelet (p-selectin) ligand; P-selectin glycoprotein ligand 1; selectin P ligand; P-selectin glycoprotein ligand-1; CD162; Psgl1; Selp1; Selpl; Psgl-1;

Gene ID

20345

mRNA Refseq

NM_009151

Protein Refseq

NP_033177

Chromosome Location

5 F; 5 55.59 cM

Pathway

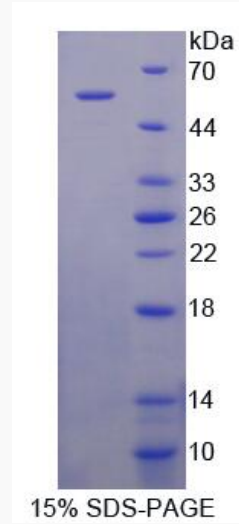
Cell adhesion molecules (CAMs), organism-specific biosystem; Cell adhesion molecules (CAMs), conserved biosystem; Cell surface interactions at the vascular wall, organism-specific biosystem; Hemostasis, organism-specific biosystem; Staphylococcus aureus infection, organism-specific biosystem; Staphylococcus aureus infection, conserved biosystem;

 Tel: 1-631-559-9269 1-516-512-3133

 Email: info@creative-biomart.com  Fax: 1-631-938-8127

 45-1 Ramsey Road, Shirley, NY 11967, USA

Function protein binding; sugar binding;



 Tel: 1-631-559-9269 1-516-512-3133

 Email: info@creative-biomart.com  Fax: 1-631-938-8127

 45-1 Ramsey Road, Shirley, NY 11967, USA