

Recombinant Mouse Selp1g protein, His-tagged

Cat. No. Selp1g-1613M **Lot. No.** (See product label)

SPECIFICATION

Product Overview	Recombinant Mouse Selp1g protein(Q62170)(Gln42-Cys307), fused with C-terminal His tag, was expressed in HEK293.
Species	Mouse
Source	C-His
ProteinLength	Gln42-Cys307
Tag	C-His
Form	Lyophilized from 0.22µm filtered solution in PBS (pH 7.4). Normally 8% trehalose is added as protectant before lyophilization.
Bio-activity	
Molecular Mass	The protein has a predicted MW of 28.74 kDa. Due to glycosylation, the protein migrates to 68-108 kDa based on Tris-Bis PAGE result.
Endotoxin	Less than 1EU per µg by the LAL method.
Purity	> 95% as determined by Tris-Bis PAGE; > 95% as determined by HPLC.
Storage	Reconstituted protein stable at -80°C for 12 months, 4°C for 1 week. Use a manual defrost freezer and avoid repeated freeze-thaw cycles.

 Tel: 1-631-559-9269 1-516-512-3133

 Email: info@creative-biomart.com  Fax: 1-631-938-8127

 45-1 Ramsey Road, Shirley, NY 11967, USA

Reconstitution Centrifuge tubes before opening. Reconstituting to a concentration more than 100 µg/ml is recommended. Dissolve the lyophilized protein in distilled water.

GENE INFORMATION

Gene Name [Selplg selectin, platelet \(p-selectin\) ligand \[Mus musculus \]](#)

Official Symbol [Selplg](#)

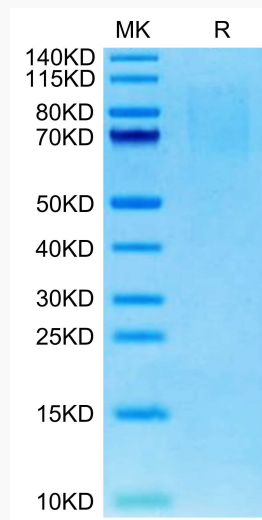
Synonyms SELPLG; selectin, platelet (p-selectin) ligand; P-selectin glycoprotein ligand 1; selectin P ligand; P-selectin glycoprotein ligand-1; CD162; Psgl1; Selp1; SelpI; Psgl-1;

Gene ID [20345](#)

mRNA Refseq [NM_009151](#)

Protein Refseq [NP_033177](#)

Tris-Bis PAGE



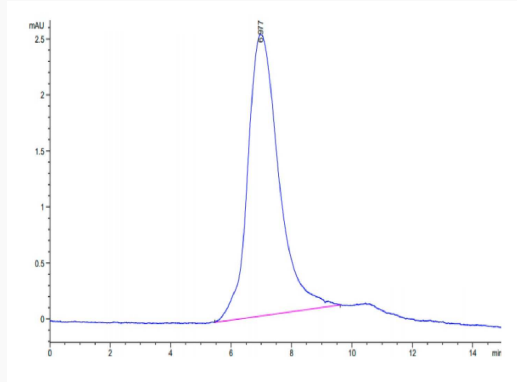
 Tel: 1-631-559-9269 1-516-512-3133

 Email: info@creative-biomart.com  Fax: 1-631-938-8127

 45-1 Ramsey Road, Shirley, NY 11967, USA



SEC-HPLC



Tel: 1-631-559-9269 1-516-512-3133

Email: info@creative-biomart.com Fax: 1-631-938-8127

45-1 Ramsey Road, Shirley, NY 11967, USA