

Recombinant Mouse Selp1g Protein (Gln42-Cys307), C-Fc tagged

Cat. No. Selp1g-5747M Lot. No. (See product label)

SPECIFICATION

Product Overview	Recombinant mouse Selp1g (Gln42-Cys307) fused with the C-terminal Fc tag was expressed in mammalian cells.
Species	Mouse
Source	Mammalian Cells
ProteinLength	Gln42-Cys307
Form	Lyophilized powder/frozen liquid
Molecular Mass	54.26 kDa
Purity	> 90 % as determined by SDS-PAGE
Notes	For research use only.
Storage	Use a manual defrost freezer and avoid repeated freeze thaw cycles. Store at 2 to 8 centigrade for one week. Store at -20 to -80 centigrade for twelve months from the date of receipt.
Storage Buffer	Supplied as solution form in PBS or lyophilized from PBS.
Reconstitution	Reconstitute in sterile water for a stock solution.

 Tel: 1-631-559-9269 1-516-512-3133

 Email: info@creative-biomart.com  Fax: 1-631-938-8127

 45-1 Ramsey Road, Shirley, NY 11967, USA

Shipping

They are shipped out with dry ice/blue ice unless customers require otherwise.

GENE INFORMATION**Gene Name**Selplg selectin, platelet (p-selectin) ligand [*Mus musculus* (house mouse)]**Official Symbol**

Selplg

Synonyms

SELPLG; selectin, platelet (p-selectin) ligand; P-selectin glycoprotein ligand 1; selectin P ligand; P-selectin glycoprotein ligand-1; CD162; Psgl1; Selp1; Selpl; Psgl-1;

Gene ID

20345

mRNA Refseq

NM_009151

Protein Refseq

NP_033177

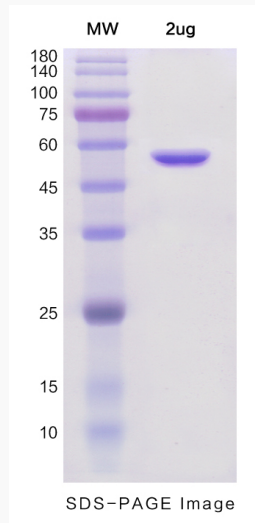
UniProt ID

Q62170

 Tel: 1-631-559-9269 1-516-512-3133 Email: info@creative-biomart.com  Fax: 1-631-938-8127 45-1 Ramsey Road, Shirley, NY 11967, USA



SDS-PAGE



Tel: 1-631-559-9269 1-516-512-3133

Email: info@creative-biomart.com Fax: 1-631-938-8127

45-1 Ramsey Road, Shirley, NY 11967, USA