

Recombinant Mouse Sema3a protein, His & T7-tagged

Cat. No. Sema3a-1904M Lot. No. (See product label)

SPECIFICATION

| | |
|-------------------------|---|
| Product Overview | Recombinant Mouse Sema3a aa. (Arg31~Pro150 (Accession # O08665)) fused with N-terminal His & T7 tag was produced in E. coli cells. |
| Species | Mouse |
| Source | E.coli |
| ProteinLength | Arg31~Pro150 |
| Form | Freeze-dried powder |
| Molecular Mass | Predicted Molecular Mass: 17.7kDa |
| Endotoxin | <1.0EU per 1ug (determined by the LAL method) |
| Purity | >95% |
| Applications | SDS-PAGE; WB; ELISA; IP. |
| Stability | The thermal stability is described by the loss rate. The loss rate was determined by accelerated thermal degradation test, that is, incubate the protein at 37°C for 48h, and no obvious degradation and precipitation were observed. The loss rate is less than 5% within the expiration date under appropriate storage condition. |
| Storage | Avoid repeated freeze/thaw cycles. Store at 2-8°C for one month. Aliquot and store at |

 Tel: 1-631-559-9269 1-516-512-3133

 Email: info@creative-biomart.com  Fax: 1-631-938-8127

 45-1 Ramsey Road, Shirley, NY 11967, USA

-80°C for 12 months.

Storage buffer Supplied as lyophilized form in PBS, pH7.4, containing 5% sucrose, 0.01% sarcosyl.

Reconstitution Reconstitute in sterile PBS, pH7.2-pH7.4.

Isoelectric Point 8.9

GENE INFORMATION

Gene Name [Sema3a sema domain, immunoglobulin domain \(Ig\), short basic domain, secreted, \(semaphorin\) 3A \[Mus musculus \(house mouse\) \]](#)

Official Symbol [Sema3a](#)

Synonyms [Sema3a](#); sema domain, immunoglobulin domain (Ig), short basic domain, secreted, (semaphorin) 3A; SemD; SEMA1; Semad; coll-1; Hsema-I; semaphorin-3A; collapsin-1; sema D; sema III; semaphorin III; semaphorin-D

Gene ID [20346](#)

mRNA Refseq [NM_001243072.1](#)

Protein Refseq [NP_001230001.1](#)

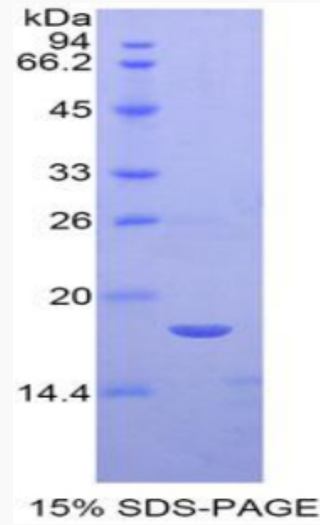
UniProt ID [O08665](#)

 Tel: 1-631-559-9269 1-516-512-3133

 Email: info@creative-biomart.com  Fax: 1-631-938-8127

 45-1 Ramsey Road, Shirley, NY 11967, USA

SDS-PAGE



 Tel: 1-631-559-9269 1-516-512-3133

 Email: info@creative-biomart.com  Fax: 1-631-938-8127

 45-1 Ramsey Road, Shirley, NY 11967, USA