

Recombinant Mouse Sema3e protein, His-tagged

Cat. No. Sema3e-1909M **Lot. No.** (See product label)

SPECIFICATION

Product Overview	Recombinant Mouse Sema3e aa. (Ala581~Thr669 (Accession # P70275)) fused with N-terminal His tag was produced in E. coli cells.
Species	Mouse
Source	E.coli
ProteinLength	Ala581~Thr669
Form	Freeze-dried powder
Molecular Mass	Predicted Molecular Mass: 11.9kDa
Endotoxin	<1.0EU per 1ug (determined by the LAL method)
Purity	>95%
Applications	SDS-PAGE; WB; ELISA; IP.
Stability	The thermal stability is described by the loss rate. The loss rate was determined by accelerated thermal degradation test, that is, incubate the protein at 37°C for 48h, and no obvious degradation and precipitation were observed. The loss rate is less than 5% within the expiration date under appropriate storage condition.
Storage	Avoid repeated freeze/thaw cycles. Store at 2-8°C for one month. Aliquot and store at

 Tel: 1-631-559-9269 1-516-512-3133

 Email: info@creative-biomart.com  Fax: 1-631-938-8127

 45-1 Ramsey Road, Shirley, NY 11967, USA

-80°C for 12 months.

Storage buffer Supplied as lyophilized form in PBS, pH7.4, containing 5% trehalose, 0.01% sarcosyl.

Reconstitution Reconstitute in sterile PBS, pH7.2-pH7.4.

Isoelectric Point 8.7

GENE INFORMATION

Gene Name [Sema3e sema domain, immunoglobulin domain \(Ig\), short basic domain, secreted, \(semaphorin\) 3E \[Mus musculus \(house mouse\) \]](#)

Official Symbol [Sema3e](#)

Synonyms Sema3e; sema domain, immunoglobulin domain (Ig), short basic domain, secreted, (semaphorin) 3E; Semah; AA408817; mKIAA0331; 6430702L12; semaphorin-3E; sema H; semaphorin-H

Gene ID [20349](#)

mRNA Refseq [NM_011348.2](#)

Protein Refseq [NP_035478.2](#)

UniProt ID [P70275](#)

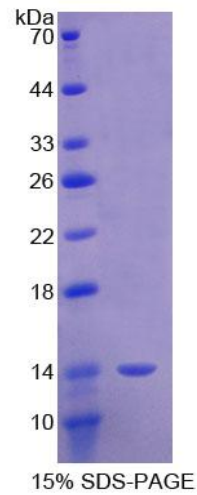
 Tel: 1-631-559-9269 1-516-512-3133

 Email: info@creative-biomart.com  Fax: 1-631-938-8127

 45-1 Ramsey Road, Shirley, NY 11967, USA



SDS-PAGE



Tel: 1-631-559-9269 1-516-512-3133

Email: info@creative-biomart.com Fax: 1-631-938-8127

45-1 Ramsey Road, Shirley, NY 11967, USA