

## Recombinant Mouse Senp2, His-tagged

Cat. No. Senp2-688M    Lot. No. (See product label)

### SPECIFICATION

<b>Product Overview</b>	Recombinant Mouse Senp2 is produced in E. coli. The peptidase domain of mouse SENP2 (aa 394-588) is fused at the N-terminus to a His tag.
<b>Species</b>	Mouse
<b>Source</b>	E.coli
<b>Description</b>	Sentrin-specific protease 2 is an enzyme that in humans is encoded by the SENP2 gene. SUMO1 is a small ubiquitin-like protein that can be covalently conjugated to other proteins. SENP2 is one of a group of enzymes that process newly synthesized SUMO1 into the conjugatable form and catalyze the deconjugation of SUMO1-containing species.
<b>Purity</b>	≥90% (SDS-PAGE).
<b>Endotoxin Content</b>	<1EU/g protein (LAL-test).
<b>Formulation</b>	Liquid. 0.2µm-filtered solution in 50mM TRIS-HCl, pH 8.2, containing 200mM NaCl.
<b>Stability</b>	Stable for at least 6 months after receipt when stored at -20°C.
<b>Storage</b>	Long term storage: -20°C, short term storage: +4°C. After reconstitution, prepare aliquots and store at -20°C. Avoid freeze/thaw cycles.

### GENE INFORMATION

 Tel: 1-631-559-9269    1-516-512-3133

 Email: [info@creative-biomart.com](mailto:info@creative-biomart.com)     Fax: 1-631-938-8127

 45-1 Ramsey Road, Shirley, NY 11967, USA

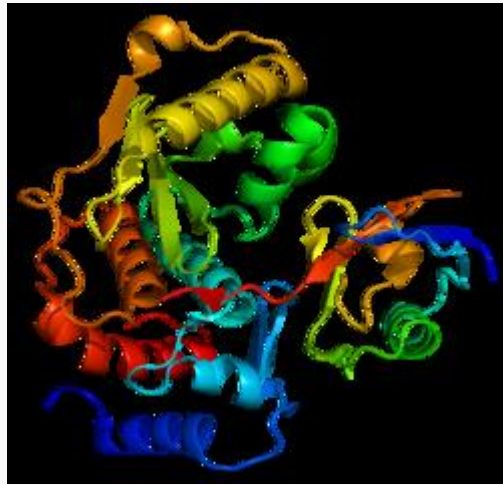
<b>Gene Name</b>	<a href="#">Senp2 SUMO/sentrin specific peptidase 2 [ Mus musculus ]</a>
<b>Synonyms</b>	Senp2; SUMO/sentrin specific peptidase 2; SuPr-1; Smt3ip2; AI646780; AW554757; KIAA1331; mKIAA1331; 2310007L05Rik; 4930538C18Rik; SUMO-1 protease 1; SUMO-1 protease-1; SUMO-1/Smt3-specific isopeptidase 2; SUMO/sentrin specific protease 2; axam2; sentrin-specific protease 2; sentrin/SUMO-specific protease SENP2
<b>Gene ID</b>	<a href="#">75826</a>
<b>mRNA Refseq</b>	<a href="#">NM_029457</a>
<b>Protein Refseq</b>	<a href="#">NP_083733</a>
<b>UniProt ID</b>	<a href="#">Q91ZX6</a>
<b>Chromosome Location</b>	16 B1
<b>Pathway</b>	Wnt signaling pathway
<b>Function</b>	cysteine-type peptidase activity; hydrolase activity; peptidase activity; protein binding

 Tel: 1-631-559-9269 1-516-512-3133

 Email: [info@creative-biomart.com](mailto:info@creative-biomart.com)  Fax: 1-631-938-8127

 45-1 Ramsey Road, Shirley, NY 11967, USA

PDB rendering based  
on 1tgz.



 Tel: 1-631-559-9269 1-516-512-3133

 Email: [info@creative-biomart.com](mailto:info@creative-biomart.com)  Fax: 1-631-938-8127

 45-1 Ramsey Road, Shirley, NY 11967, USA