

Recombinant Rat Serpina12 Protein (Leu21-Pro411), N-His tagged

Cat. No. Serpina12-6851R Lot. No. (See product label)

SPECIFICATION

Product Overview	Recombinant rat Serpina12 (Leu21-Pro411) fused with the N-terminal His tag was expressed in E. coli.
Species	Rat
Source	E.coli
ProteinLength	Leu21-Pro411
Description	Predicted to enable serine-type endopeptidase inhibitor activity. Involved in glucose metabolic process. Predicted to be located in plasma membrane. Predicted to be active in extracellular space. Used to study obesity and type 2 diabetes mellitus. Orthologous to human SERPINA12 (serpin family A member 12).
Form	Lyophilized powder/frozen liquid
Molecular Mass	43.12 kDa
Purity	> 90 % as determined by SDS-PAGE
Notes	For research use only.
Storage	Use a manual defrost freezer and avoid repeated freeze thaw cycles. Store at 2 to 8 centigrade for one week. Store at -20 to -80 centigrade for twelve months from the

 Tel: 1-631-559-9269 1-516-512-3133

 Email: info@creative-biomart.com  Fax: 1-631-938-8127

 45-1 Ramsey Road, Shirley, NY 11967, USA

	date of receipt.
Storage Buffer	Supplied as solution form in PBS or lyophilized from PBS.
Reconstitution	Reconstitute in sterile water for a stock solution.
Shipping	They are shipped out with dry ice/blue ice unless customers require otherwise.
GENE INFORMATION	
Gene Name	Serpina12 serpin family A member 12 [<i>Rattus norvegicus</i> (Norway rat)]
Official Symbol	Serpina12
Synonyms	Serpina12; serpin family A member 12; OI64; OI-64; serpin A12; serine (or cysteine) peptidase inhibitor, clade A (alpha-1 antiproteinase, antitrypsin), member 12; serine (or cysteine) peptidase inhibitor, clade A, member 12; serpin peptidase inhibitor, clade A (alpha-1 antiproteinase, antitrypsin), member 12; serpin peptidase inhibitor, clade A, member 12; vaspin; visceral adipose tissue-derived serine protease inhibitor; visceral adipose tissue-derived serpin; visceral adipose-specific serpin
Gene ID	191570
mRNA Refseq	NM_138825
Protein Refseq	NP_620180
UniProt ID	Q8R4Z1

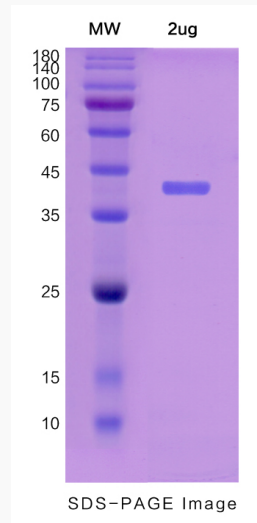
 Tel: 1-631-559-9269 1-516-512-3133

 Email: info@creative-biomart.com  Fax: 1-631-938-8127

 45-1 Ramsey Road, Shirley, NY 11967, USA



SDS-PAGE



Tel: 1-631-559-9269 1-516-512-3133

Email: info@creative-biomart.com Fax: 1-631-938-8127

45-1 Ramsey Road, Shirley, NY 11967, USA