

Recombinant Mouse Serpina1b Protein (Glu25-Lys413), C-His tagged

Cat. No. Serpina1b-6798M Lot. No. (See product label)

SPECIFICATION

Product Overview	Recombinant mouse Serpina1b (Glu25-Lys413) fused with the C-terminal His tag was expressed in mammalian cells.
Species	Mouse
Source	Mammalian Cells
ProteinLength	Glu25-Lys413
Description	Enables serine-type endopeptidase inhibitor activity. Acts upstream of or within several processes, including in utero embryonic development; protein N-linked glycosylation; and response to peptide hormone. Located in extracellular region. Is expressed in gut; liver lobe; nucleus pulposus; and renal calyx. Human ortholog (s) of this gene implicated in several diseases, including alpha 1-antitrypsin deficiency; artery disease (multiple); chronic obstructive pulmonary disease (multiple); inflammatory bowel disease (multiple); and liver disease (multiple). Orthologous to human SERPINA1 (serpin family A member 1).
Form	Lyophilized powder/frozen liquid
Molecular Mass	42.79 kDa
Purity	> 90 % as determined by SDS-PAGE

 Tel: 1-631-559-9269 1-516-512-3133

 Email: info@creative-biomart.com  Fax: 1-631-938-8127

 45-1 Ramsey Road, Shirley, NY 11967, USA

Notes	For research use only.
Storage	Use a manual defrost freezer and avoid repeated freeze thaw cycles. Store at 2 to 8 centigrade for one week. Store at -20 to -80 centigrade for twelve months from the date of receipt.
Storage Buffer	Supplied as solution form in PBS or lyophilized from PBS.
Reconstitution	Reconstitute in sterile water for a stock solution.
Shipping	They are shipped out with dry ice/blue ice unless customers require otherwise.
GENE INFORMATION	
Gene Name	Serpina1b serine (or cysteine) preptidase inhibitor, clade A, member 1B [<i>Mus musculus</i> (house mouse)]
Official Symbol	Serpina1b
Synonyms	Serpina1b; serine (or cysteine) preptidase inhibitor, clade A, member 1B; PI2; Dom2; Spi1-2; D12Ucla2; alpha-1-antitrypsin 1-2; AAT; alpha-1 protease inhibitor 2; alpha-1-antiproteinase; serine (or cysteine) proteinase inhibitor, clade A, member 1b; serine protease inhibitor 1-2; serine protease inhibitor A1b; serpin A1b
Gene ID	20701
mRNA Refseq	NM_009244
Protein Refseq	NP_033270
UniProt ID	P22599

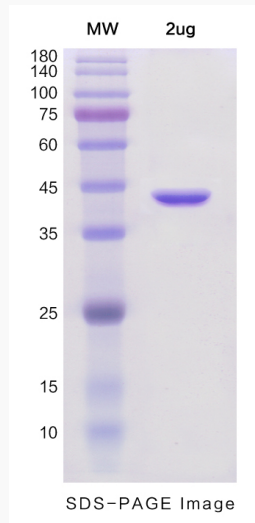
 Tel: 1-631-559-9269 1-516-512-3133

 Email: info@creative-biomart.com  Fax: 1-631-938-8127

 45-1 Ramsey Road, Shirley, NY 11967, USA



SDS-PAGE



Tel: 1-631-559-9269 1-516-512-3133

Email: info@creative-biomart.com Fax: 1-631-938-8127

45-1 Ramsey Road, Shirley, NY 11967, USA