

Recombinant Mouse Serpina3n Protein, His-tagged

Cat. No. Serpina3n-530M Lot. No. (See product label)

SPECIFICATION

Product Overview	Recombinant Mouse Serpina3n Protein(NP_033278.2) (Phe21-Lys418), fused to a 6His tag at the C-terminus, was expressed in Mammalian expression system.
Species	Mouse
Source	HEK293
Protein Length	Phe21-Lys418
Description	Serine protease inhibitor A3N(Serpin A3N) is a serine protease inhibitor that is structurally related to α 1 antichymotrypsin encoded by the SERPINA3 gene. Serpin A3N is highly expressed in brain, testis, lung, thymus, and spleen. It is expressed with low levels in bone marrow, kidney and skeletal muscle. Serpin A3N secreted by Sertoli cells may regulate the activity of locally produced Granzyme B. Granzyme B inhibition by Serpin A3N may therefore regulate Granzyme B mediated killing by cytotoxic lymphocytes, providing a means to disable cell mediated immune responses.
Form	Supplied as a 0.2 μ m filtered solution of 20mM Tris-HCl, 150mM NaCl, pH8.0.
Molecular Mass	58kDa, reducing conditions.
Endotoxin	Less than 0.1 ng/g (1 EU/g) as determined by LAL test.
Purity	Greater than 95% as determined by reducing SDS-PAGE

 Tel: 1-631-559-9269 1-516-512-3133

 Email: info@creative-biomart.com  Fax: 1-631-938-8127

 45-1 Ramsey Road, Shirley, NY 11967, USA

Storage	<p>Store at $\leq -70^{\circ}\text{C}$, stable for 6 months after receipt.</p> <p>Store at $\leq -70^{\circ}\text{C}$, stable for 3 months under sterile conditions after opening.</p> <p>Please minimize freeze-thaw cycles.</p>
Reconstitution	<p>It is recommended that sterile water be added to the vial to prepare a stock solution of 0.25 mg/ml. Centrifuge the vial at 4°C before opening to recover the entire contents.</p>
Shipping	<p>The product is shipped on dry ice/polar packs.</p> <p>Upon receipt, store it immediately at the temperature listed below.</p>

GENE INFORMATION

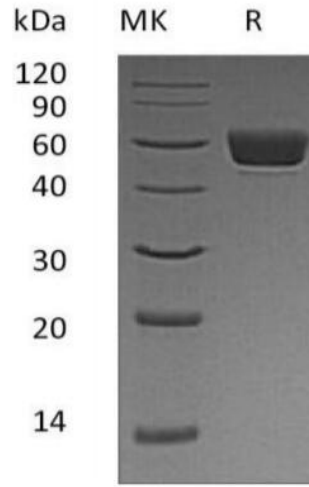
Gene Name	Serpina3n serine (or cysteine) peptidase inhibitor, clade A, member 3N [<i>Mus musculus</i> (house mouse)]
Official Symbol	Serpina3n
Synonyms	Spi; ant; Spi2-2; Spi2.2; Spi2/e; Spi2/eb.4
Gene ID	20716
mRNA Refseq	NM_009252.2
Protein Refseq	NP_033278.2
UniProt ID	Q91WP6

 Tel: 1-631-559-9269 1-516-512-3133

 Email: info@creative-biomart.com  Fax: 1-631-938-8127

 45-1 Ramsey Road, Shirley, NY 11967, USA

SDS-PAGE



 Tel: 1-631-559-9269 1-516-512-3133

 Email: info@creative-biomart.com  Fax: 1-631-938-8127

 45-1 Ramsey Road, Shirley, NY 11967, USA