

Recombinant Mouse Serpind1 Protein, GST-tagged

Cat. No. Serpind1-368M Lot. No. (See product label)

SPECIFICATION

Product Overview	Recombinant Mouse Serpind1(Ala256~Leu342) fused with GST tag at N-terminal was expressed in E. coli.
Species	Mouse
Source	E.coli
ProteinLength	Ala256~Leu342
Description	Serpind1 played an important role in many functions.
Form	20mM Tris, 150mM NaCl,pH8.0, containing 1mM EDTA, 1mM DTT, 0.01% SKL, 5% Trehalose and Proclin300.
Molecular Mass	40kDa
Identity	Reconstitute in 20mM Tris, 150mM NaCl (pH8.0) to a concentration of 0.1-1.0 mg/mL. Do not vortex.
Endotoxin	<1.0EU per 1g (determined by the LAL method)
Purity	> 90%
Applications	Positive Control; Immunogen; SDS-PAGE; WB. If bio-activity of the protein is needed, please check active protein

 Tel: 1-631-559-9269 1-516-512-3133

 Email: info@creative-biomart.com  Fax: 1-631-938-8127

 45-1 Ramsey Road, Shirley, NY 11967, USA

Stability The thermal stability is described by the loss rate. The loss rate was determined by accelerated thermal degradation test, that is, incubate the protein at 37 centigrade for 48h, and no obvious degradation and precipitation were observed. The loss rate is less than 5% within the expiration date under appropriate storage condition.

Storage Avoid repeated freeze/thaw cycles. Store at 2-8 centigrade for one month. Aliquot and store at -80 centigrade for 12 months.

Reconstitution Reconstitute in PBS or others

GENE INFORMATION

Gene Name [Serpind1 serine \(or cysteine\) peptidase inhibitor, clade D, member 1 \[Mus musculus \]](#)

Official Symbol [Serpind1](#)

Synonyms SERPIND1; serine (or cysteine) peptidase inhibitor, clade D, member 1; heparin cofactor 2; HC-II; serpin D1; heparin cofactor II; protease inhibitor leuserpin-2; serine (or cysteine) proteinase inhibitor, clade D (heparin cofactor), member 1; HCII; Hcf2; AA985900; AI303446; MGC107662;

Gene ID [15160](#)

mRNA Refseq [NM_008223](#)

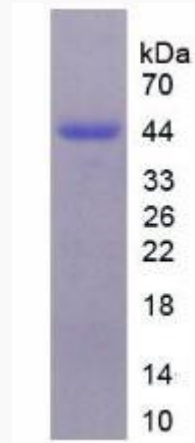
Protein Refseq [NP_032249](#)

UniProt ID [P49182](#)

 Tel: 1-631-559-9269 1-516-512-3133

 Email: info@creative-biomart.com  Fax: 1-631-938-8127

 45-1 Ramsey Road, Shirley, NY 11967, USA



Tel: 1-631-559-9269 1-516-512-3133

Email: info@creative-biomart.com Fax: 1-631-938-8127

45-1 Ramsey Road, Shirley, NY 11967, USA