

Recombinant Rat Serpind1 Protein, His-tagged

Cat. No. Serpind1-369R Lot. No. (See product label)

SPECIFICATION

Product Overview	Recombinant Rat Serpind1 (Glu25~Asp235) fused with His tag at N-terminal was expressed in E. coli.
Species	Rat
Source	E.coli
ProteinLength	Glu25~Asp235
Description	Serpind1 played an important role in many functions.
Form	PBS, pH7.4, containing 0.01% SKL, 1mM DTT, 5% Trehalose and Proclin300.
Molecular Mass	28.1kDa
Identity	Reconstitute in PBS or others
Endotoxin	<1.0EU per 1g (determined by the LAL method)
Purity	> 95%
Applications	Positive Control; Immunogen; SDS-PAGE; WB. If bio-activity of the protein is needed, please check active protein
Stability	The thermal stability is described by the loss rate. The loss rate was determined by

 Tel: 1-631-559-9269 1-516-512-3133

 Email: info@creative-biomart.com  Fax: 1-631-938-8127

 45-1 Ramsey Road, Shirley, NY 11967, USA

accelerated thermal degradation test, that is, incubate the protein at 37 centigrade for 48h, and no obvious degradation and precipitation were observed. The loss rate is less than 5% within the expiration date under appropriate storage condition.

Storage

Avoid repeated freeze/thaw cycles. Store at 2-8 centigrade for one month. Aliquot and store at -80 centigrade for 12 months.

Reconstitution

Reconstitute in PBS or others

GENE INFORMATION

Gene Name

Serpind1 serpin peptidase inhibitor, clade D (heparin cofactor), member 1 [*Rattus norvegicus*]

Official Symbol

Serpind1

Synonyms

SERPIND1; serpin peptidase inhibitor, clade D (heparin cofactor), member 1; heparin cofactor 2; HC-II; serpin D1; leuserpin 2; leuserpin-2; heparin cofactor II; protease inhibitor leuserpin-2; serine (or cysteine) peptidase inhibitor, clade D, member 1; serine (or cysteine) proteinase inhibitor, clade D, member 1; rls2var1;

Gene ID

79224

mRNA Refseq

NM_024382

Protein Refseq

NP_077358

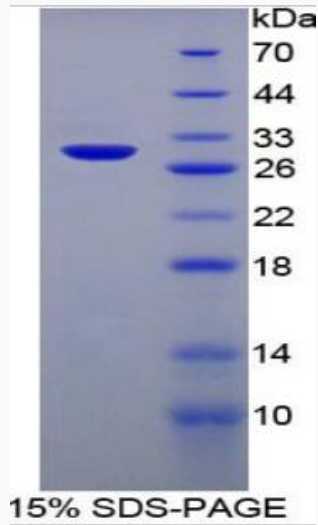
UniProt ID

Q64268

 Tel: 1-631-559-9269 1-516-512-3133

 Email: info@creative-biomart.com  Fax: 1-631-938-8127

 45-1 Ramsey Road, Shirley, NY 11967, USA



 Tel: 1-631-559-9269 1-516-512-3133

 Email: info@creative-biomart.com  Fax: 1-631-938-8127

 45-1 Ramsey Road, Shirley, NY 11967, USA