

Recombinant Mouse Serpind1 Protein (Glu24-Ser478), C-His tagged

Cat. No. Serpind1-6799M **Lot. No.** (See product label)

SPECIFICATION

Product Overview	Recombinant mouse Serpind1 (Glu24-Ser478) fused with the C-terminal His tag was expressed in mammalian cells.
Species	Mouse
Source	Mammalian Cells
ProteinLength	Glu24-Ser478
Description	Predicted to enable serine-type endopeptidase inhibitor activity. Predicted to be involved in negative regulation of endopeptidase activity. Predicted to act upstream of or within blood coagulation and negative regulation of peptidase activity. Predicted to be active in extracellular space. Is expressed in liver. Human ortholog (s) of this gene implicated in heparin cofactor II deficiency. Orthologous to human SERPIND1 (serpin family D member 1).
Form	Lyophilized powder/frozen liquid
Molecular Mass	50.05 kDa
Purity	> 90 % as determined by SDS-PAGE
Notes	For research use only.

 Tel: 1-631-559-9269 1-516-512-3133

 Email: info@creative-biomart.com  Fax: 1-631-938-8127

 45-1 Ramsey Road, Shirley, NY 11967, USA

Storage	Use a manual defrost freezer and avoid repeated freeze thaw cycles. Store at 2 to 8 centigrade for one week. Store at -20 to -80 centigrade for twelve months from the date of receipt.
Storage Buffer	Supplied as solution form in PBS or lyophilized from PBS.
Reconstitution	Reconstitute in sterile water for a stock solution.
Shipping	They are shipped out with dry ice/blue ice unless customers require otherwise.

GENE INFORMATION

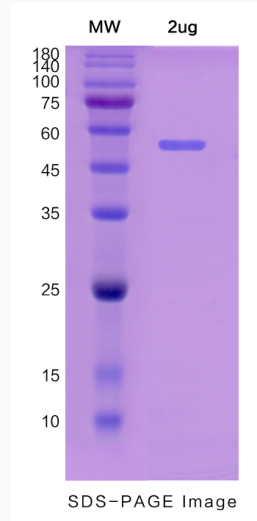
Gene Name	Serpind1 serine (or cysteine) peptidase inhibitor, clade D, member 1 [<i>Mus musculus</i> (house mouse)]
Official Symbol	Serpind1
Synonyms	Serpind1; serine (or cysteine) peptidase inhibitor, clade D, member 1; HCII; Hcf2; HC-II; heparin cofactor 2; heparin cofactor II; protease inhibitor leuserpin-2; serine (or cysteine) proteinase inhibitor, clade D (heparin cofactor), member 1; serpin D1
Gene ID	15160
mRNA Refseq	NM_008223
Protein Refseq	NP_032249
UniProt ID	P49182

 Tel: 1-631-559-9269 1-516-512-3133

 Email: info@creative-biomart.com  Fax: 1-631-938-8127

 45-1 Ramsey Road, Shirley, NY 11967, USA

SDS-PAGE



 Tel: 1-631-559-9269 1-516-512-3133

 Email: info@creative-biomart.com  Fax: 1-631-938-8127

 45-1 Ramsey Road, Shirley, NY 11967, USA