

Recombinant Mouse Serpine1

Cat. No. Serpine1-2462M **Lot. No.** (See product label)

SPECIFICATION

| | |
|-----------------------------|--|
| Product Overview | Recombinant Mouse Serpine1 was expressed in <i>E.Coli</i> . It was the ideal choice for studies involving this animal model of fibrinolysis and cancer studies. The active fraction typically contained 70 percent active PAI-1. MW=43 KDa. |
| Species | Mouse |
| Source | E.coli |
| Description | Plasminogen activator inhibitor-1 is the principal inhibitor of tissue plasminogen activator (tPA) and urokinase (uPA), the activators of plasminogen and hence fibrinolysis (the physiological breakdown of blood clots). It is a serine protease inhibitor (serpin) protein (SERPINE1). The other PAI, plasminogen activator inhibitor-2 (PAI-2) is secreted by the placenta and only present in significant amounts during pregnancy. In addition, protease nexin acts as an inhibitor of tPA and urokinase. PAI-1, however, is the main inhibitor of the plasminogen activators. |
| Concentration | 2.5 mg/ml. |
| Volume | 0.2 ml. |
| Buffer | 0.05 M Sodium Acetate; 0.1 M NaCl; 1 mM EDTA; pH 5.0. |
| Form | Frozen liquid. |
| Shipping Information | Recommended Storage: -70°C; Shipping Conditions: Dry ice; Minimum Shelf Life: 3 |

 Tel: 1-631-559-9269 1-516-512-3133

 Email: info@creative-biomart.com  Fax: 1-631-938-8127

 45-1 Ramsey Road, Shirley, NY 11967, USA

years from delivery.

GENE INFORMATION

| | |
|----------------------------|---|
| Gene Name | Serpine1 serine (or cysteine) peptidase inhibitor, clade E, member 1 [<i>Mus musculus</i>] |
| Synonyms | Serpine1; serine (or cysteine) peptidase inhibitor, clade E, member 1; PAI1; PAI-1; Planh1; plasminogen activator inhibitor 1; PAI; serpin E1; plasminogen activator inhibitor, type I; endothelial plasminogen activator inhibitor; nexin, plasminogen activator inhibitor type 1; serine (or cysteine) proteinase inhibitor, clade E, member 1; Plasminogen activator inhibitor-1 precursor (PAI-1) (Endothelial plasminogen activator inhibitor) (PAI) |
| Gene ID | 18787 |
| mRNA Refseq | NM_008871 |
| Protein Refseq | NP_032897 |
| UniProt ID | P22777 |
| Chromosome Location | 5 G2 |
| Pathway | Chagas disease; Complement and coagulation cascades; p53 signaling pathway |
| Function | peptidase inhibitor activity; protein binding; serine-type endopeptidase activity; serine-type endopeptidase inhibitor activity |

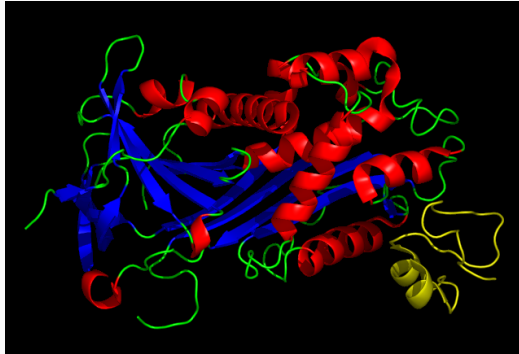
 Tel: 1-631-559-9269 1-516-512-3133

 Email: info@creative-biomart.com  Fax: 1-631-938-8127

 45-1 Ramsey Road, Shirley, NY 11967, USA



**PAI-1 in complex
with the SMB domain
of Vitronectin PDB
1OC0**



 Tel: 1-631-559-9269 1-516-512-3133

 Email: info@creative-biomart.com  Fax: 1-631-938-8127

 45-1 Ramsey Road, Shirley, NY 11967, USA