

Recombinant Mouse Serpine1 protein, His & T7-tagged

Cat. No. Serpine1-2752M Lot. No. (See product label)

SPECIFICATION

Product Overview	Recombinant Mouse Serpine1 aa. (Gln141~Pro389 (Accession # P22777)) fused with N-terminal His & T7 tag was produced in E. coli cells.
Species	Mouse
Source	E.coli
ProteinLength	Gln141~Pro389
Form	Freeze-dried powder
Molecular Mass	28kDa as determined by SDS-PAGE reducing conditions.
Endotoxin	<1.0EU per 1g (determined by the LAL method)
Purity	>90%
Characteristic	The isoelectric point is 6.2.
Applications	SDS-PAGE; WB; ELISA; IP.
Stability	The thermal stability is described by the loss rate. The loss rate was determined by accelerated thermal degradation test, that is, incubate the protein at 37°C for 48h, and no obvious degradation and precipitation were observed. The loss rate is less than 5% within the expiration date under appropriate storage condition.

 Tel: 1-631-559-9269 1-516-512-3133

 Email: info@creative-biomart.com  Fax: 1-631-938-8127

 45-1 Ramsey Road, Shirley, NY 11967, USA

Storage	Avoid repeated freeze/thaw cycles. Store at 2-8°C for one month. Aliquot and store at -80°C for 12 months.
Storage buffer	Supplied as lyophilized form in 20mM Tris, 150mM NaCl, pH8.0, containing 1mM EDTA, 1mM DTT, 0.01% sarcosyl, 5% trehalose, and preservative.
Reconstitution	Reconstitute in sterile ddH2O

GENE INFORMATION

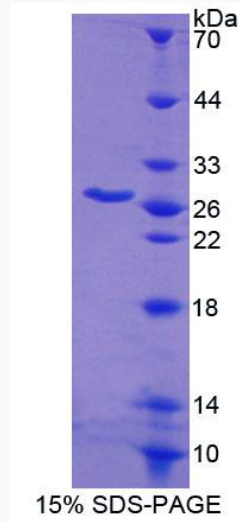
Gene Name	Serpine1 serine (or cysteine) peptidase inhibitor, clade E, member 1 [<i>Mus musculus</i> (house mouse)]
Official Symbol	Serpine1
Synonyms	PAI1; PAI-1; Planh1; PAI; Plasminogen activator inhibitor-1 precursor (PAI-1) (Endothelial plasminogen activator inhibitor) (PAI); endothelial plasminogen activator inhibitor; nexin, plasminogen activator inhibitor type 1; plasminogen activator inhibitor, type I; serine (or cysteine) proteinase inhibitor, clade E, member; serpin E1; plasminogen activator inhibitor 1
Gene ID	18787
mRNA Refseq	NM_008871.2
Protein Refseq	NP_032897.2
UniProt ID	P22777

 Tel: 1-631-559-9269 1-516-512-3133

 Email: info@creative-biomart.com  Fax: 1-631-938-8127

 45-1 Ramsey Road, Shirley, NY 11967, USA

SDS-PAGE



 Tel: 1-631-559-9269 1-516-512-3133

 Email: info@creative-biomart.com  Fax: 1-631-938-8127

 45-1 Ramsey Road, Shirley, NY 11967, USA