

Recombinant Mouse Serine (or cysteine) Peptidase Inhibitor, Clade E, Member 1

Cat. No. Serpine1-5282M **Lot. No.** (See product label)

SPECIFICATION

Product Overview	Recombinant Mouse Serpine1 was expressed in Mouse Plasma.
Species	Mouse
Source	Mouse Plasma
Description	Serpine1 is the principal inhibitor of Tissue Plasminogen Activator (tPA) and Urokinase (uPA), the activators of Plasminogen and hence fibrinolysis. It is a serine protease inhibitor (serpin) protein (SERPINE1). Serpine1 is mainly produced by the endothelium, but is also secreted by other tissue types, such as adipose tissue.
Form	Frozen Liquid
Specific Activity	Undetectable concentration of PAI1 Antigen.
Concentration	< 0.1 ng/mL PAI1 Antigen
Storage	Store at -70°C.
Official Symbol	Serpine1

GENE INFORMATION

Gene Name	Serpine1 serine (or cysteine) peptidase inhibitor, clade E, member 1 [<i>Mus musculus</i>]
------------------	--

 Tel: 1-631-559-9269 1-516-512-3133

 Email: info@creative-biomart.com  Fax: 1-631-938-8127

 45-1 Ramsey Road, Shirley, NY 11967, USA

Synonyms	Serpine1; serine (orcysteine) peptidase inhibitor, clade E, member 1; PAI1; PAI-1; Planh1; plasminogen activator inhibitor 1; PAI; serpin E1; plasminogen activatorinhibitor, type I; endothelial plasminogen activator inhibitor; nexin, plasminogen activator inhibitor type 1; serine (or cysteine) proteinaseinhibitor, clade E, member 1; Plasminogen activator inhibitor-1 precursor(PAI-1) (Endothelial plasminogen activator inhibitor) (PAI)
Gene ID	18787
mRNA Refseq	NM_008871
Protein Refseq	NP_032897
UniProt ID	P22777
Chromosome Location	5 G2
Pathway	Adipogenesis; BloodClotting Cascade; Chagas disease (American trypanosomiasis); Complement andCoagulation Cascades; Complement and coagulation cascades; Senescence andAutophagy; TGF Beta Signaling Pathway; p53 signaling pathway
Function	protease binding; protein binding; serine-type endopeptidase inhibitor activity

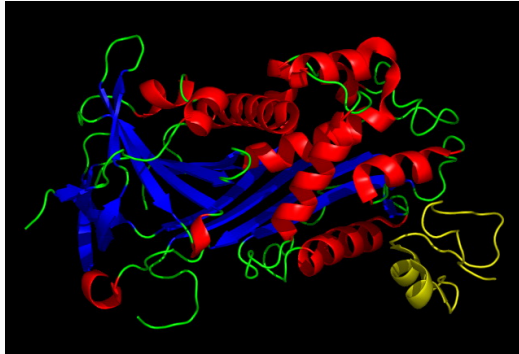
 Tel: 1-631-559-9269 1-516-512-3133

 Email: info@creative-biomart.com  Fax: 1-631-938-8127

 45-1 Ramsey Road, Shirley, NY 11967, USA



**PAI-1 incomplex with
the SMB domain of
Vitronectin PDB
1OC0**



 Tel: 1-631-559-9269 1-516-512-3133

 Email: info@creative-biomart.com  Fax: 1-631-938-8127

 45-1 Ramsey Road, Shirley, NY 11967, USA