

# Recombinant Mouse Serine (or cysteine) Peptidase Inhibitor, Clade E, Member 1

**Cat. No.** Serpine1-5319M    **Lot. No.** (See product label)

## SPECIFICATION

<b>Product Overview</b>	Recombinant Mouse Serpine1 was expressed in E. coli (PAI-1) + Insect cell culture (tPA).
<b>Species</b>	Mouse
<b>Source</b>	E.coli
<b>Description</b>	Mouserecombinant Serpine1 complexed to tPA. Mouse sc-tPA is reacted with an excess of mouse Serpine1 stablemutant at physiological pH. The resulting 1:1 molar complex is purified from the remaining Serpine1 by affinity chromatography with immobilized antibodies to mouse tPA.
<b>Form</b>	Frozen liquid in 0.4M HEPES + 0.1M NaCl, pH 7.4.
<b>Purity</b>	> 95% by SDS-PAGE analysis.
<b>Endotoxin Level</b>	< 0.1 ng/μg of protein.
<b>Concentration</b>	1.0 mg/ml
<b>Storage</b>	Store at -80°C. Stable at -80°C for 1 year from delivery. Avoid repeated freeze-thaw cycles.
<b>Official Symbol</b>	Serpine1

 Tel: 1-631-559-9269    1-516-512-3133

 Email: [info@creative-biomart.com](mailto:info@creative-biomart.com)     Fax: 1-631-938-8127

 45-1 Ramsey Road, Shirley, NY 11967, USA

## GENE INFORMATION

**Gene Name** Serpine1 serine (or cysteine)peptidase inhibitor, clade E, member 1 [ Mus musculus ]

**Synonyms** Serpine1; serine (orcysteine) peptidase inhibitor, clade E, member 1; PAI1; PAI-1; Planh1;plasminogen activator inhibitor 1; PAI; serpin E1; plasminogen activatorinhibitor, type I; endothelial plasminogen activator inhibitor; nexin,plasminogen activator inhibitor type 1; serine (or cysteine) proteinaseinhibitor, clade E, member 1; Plasminogen activator inhibitor-1 precursor(PAI-1) (Endothelial plasminogen activator inhibitor) (PAI)

**Gene ID** 18787

**mRNA Refseq** NM\_008871

**Protein Refseq** NP\_032897

**UniProt ID** P22777

**Chromosome Location** 5 G2

**Pathway** Adipogenesis; BloodClotting Cascade; Chagas disease (American trypanosomiasis); Complement andCoagulation Cascades; Complement and coagulation cascades; Senescence andAutophagy; TGF Beta Signaling Pathway; p53 signaling pathway

**Function** protease binding;protein binding; serine-type endopeptidase inhibitor activity

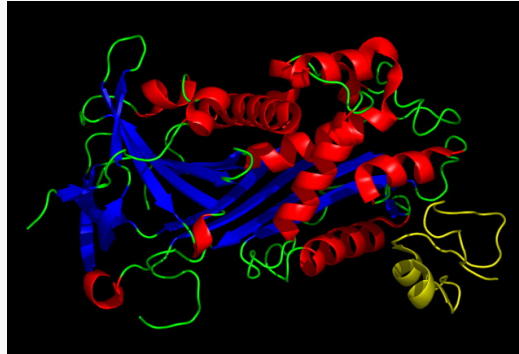
 Tel: 1-631-559-9269 1-516-512-3133

 Email: [info@creative-biomart.com](mailto:info@creative-biomart.com)  Fax: 1-631-938-8127

 45-1 Ramsey Road, Shirley, NY 11967, USA



**PAI-1 incomplex with  
the SMB domain of  
Vitronectin PDB  
1OC0**



 Tel: 1-631-559-9269 1-516-512-3133

 Email: [info@creative-biomart.com](mailto:info@creative-biomart.com)  Fax: 1-631-938-8127

 45-1 Ramsey Road, Shirley, NY 11967, USA