

Recombinant Mouse Serpine1 Protein (Leu24-Ser402), C-His tagged

Cat. No. Serpine1-6802M **Lot. No.** (See product label)

SPECIFICATION

Product Overview	Recombinant mouse Serpine1 (Leu24-Ser402) fused with the C-terminal His tag was expressed in mammalian cells.
Species	Mouse
Source	Mammalian Cells
ProteinLength	Leu24-Ser402
Description	Enables serine-type endopeptidase inhibitor activity. Involved in defense response to Gram-negative bacterium; negative regulation of plasminogen activation; and regulation of angiogenesis. Acts upstream of or within several processes, including cellular response to transforming growth factor beta stimulus; placenta development; and regulation of angiogenesis. Located in extracellular space. Is expressed in several structures, including aorta; extraembryonic component; liver; oocyte; and placenta. Used to study Coronavirus infectious disease. Human ortholog (s) of this gene implicated in several diseases, including artery disease (multiple); autoimmune disease (multiple); diabetic retinopathy (multiple); liver disease (multiple); and lung disease (multiple). Orthologous to human SERPINE1 (serpin family E member 1).
Form	Lyophilized powder/frozen liquid
Molecular Mass	41.69 kDa

 Tel: 1-631-559-9269 1-516-512-3133

 Email: info@creative-biomart.com  Fax: 1-631-938-8127

 45-1 Ramsey Road, Shirley, NY 11967, USA

Purity	> 90 % as determined by SDS-PAGE
Notes	For research use only.
Storage	Use a manual defrost freezer and avoid repeated freeze thaw cycles. Store at 2 to 8 centigrade for one week. Store at -20 to -80 centigrade for twelve months from the date of receipt.
Storage Buffer	Supplied as solution form in PBS or lyophilized from PBS.
Reconstitution	Reconstitute in sterile water for a stock solution.
Shipping	They are shipped out with dry ice/blue ice unless customers require otherwise.
GENE INFORMATION	
Gene Name	Serpine1 serine (or cysteine) peptidase inhibitor, clade E, member 1 [Mus musculus (house mouse)]
Official Symbol	Serpine1
Synonyms	plasminogen activator inhibitor 1; PAI; Plasminogen activator inhibitor-1 precursor (PAI-1) (Endothelial plasminogen activator inhibitor) (PAI); endothelial plasminogen activator inhibitor; nexin, plasminogen activator inhibitor type 1; plasminogen activator inhibitor, type I; serine (or cysteine) proteinase inhibitor, clade E, member 1; serpin E1; Serpine1; serine (or cysteine) peptidase inhibitor, clade E, member 1; PAI1; PAI-1; Planh1
Gene ID	18787
mRNA Refseq	NM_008871

 Tel: 1-631-559-9269 1-516-512-3133

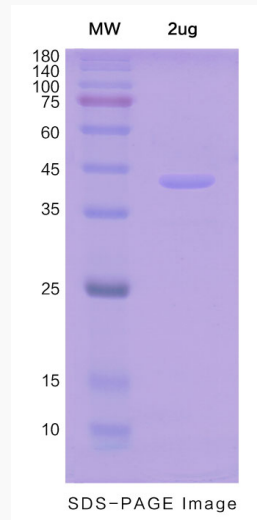
 Email: info@creative-biomart.com  Fax: 1-631-938-8127

 45-1 Ramsey Road, Shirley, NY 11967, USA

Protein Refseq NP_032897

UniProt ID P22777

SDS-PAGE



 Tel: 1-631-559-9269 1-516-512-3133

 Email: info@creative-biomart.com  Fax: 1-631-938-8127

 45-1 Ramsey Road, Shirley, NY 11967, USA