

Recombinant Mouse Serpinf2 Protein (Val28-Lys491), C-Fc tagged

Cat. No. Serpinf2-5729M Lot. No. (See product label)

SPECIFICATION

Product Overview	Recombinant mouse Serpinf2 (Val28-Lys491) fused with the C-terminal Fc tag was expressed in mammalian cells.
Species	Mouse
Source	Mammalian Cells
ProteinLength	Val28-Lys491
Form	Lyophilized powder/frozen liquid
Molecular Mass	76.04 kDa
Purity	> 90 % as determined by SDS-PAGE
Notes	For research use only.
Storage	Use a manual defrost freezer and avoid repeated freeze thaw cycles. Store at 2 to 8 centigrade for one week. Store at -20 to -80 centigrade for twelve months from the date of receipt.
Storage Buffer	Supplied as solution form in PBS or lyophilized from PBS.
Reconstitution	Reconstitute in sterile water for a stock solution.

 Tel: 1-631-559-9269 1-516-512-3133

 Email: info@creative-biomart.com  Fax: 1-631-938-8127

 45-1 Ramsey Road, Shirley, NY 11967, USA

Shipping

They are shipped out with dry ice/blue ice unless customers require otherwise.

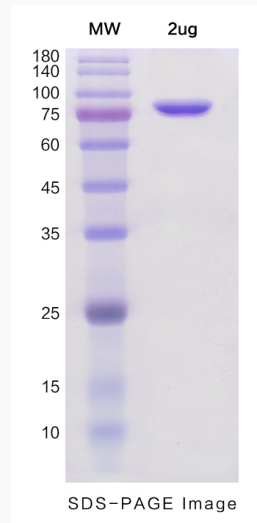
GENE INFORMATION

Gene Name	Serpinf2 serine (or cysteine) peptidase inhibitor, clade F, member 2 [Mus musculus (house mouse)]
Official Symbol	Serpinf2
Synonyms	SERPINF2; serine (or cysteine) peptidase inhibitor, clade F, member 2; alpha-2-antiplasmin; serpin F2; alpha-2-AP; alpha-2-PI; alpha 2 antiplasmin; alpha-2-plasmin inhibitor; plasmin inhibitor alpha 2; pigment epithelium derived factor; serine (or cysteine) proteinase inhibitor, clade F, member 2; Pli; A1747498; Serpimf2;
Gene ID	18816
mRNA Refseq	NM_008878
Protein Refseq	NP_032904
UniProt ID	Q61247

 Tel: 1-631-559-9269 1-516-512-3133 Email: info@creative-biomart.com  Fax: 1-631-938-8127 45-1 Ramsey Road, Shirley, NY 11967, USA



SDS-PAGE



Tel: 1-631-559-9269 1-516-512-3133

Email: info@creative-biomart.com Fax: 1-631-938-8127

45-1 Ramsey Road, Shirley, NY 11967, USA