

Recombinant Mouse Serpinf2 Protein (Val28-Lys491), C-His tagged

Cat. No. Serpinf2-6800M Lot. No. (See product label)

SPECIFICATION

| | |
|-------------------------|--|
| Product Overview | Recombinant mouse Serpinf2 (Val28-Lys491) fused with the C-terminal His tag was expressed in mammalian cells. |
| Species | Mouse |
| Source | Mammalian Cells |
| ProteinLength | Val28-Lys491 |
| Description | Predicted to enable protease binding activity; protein homodimerization activity; and serine-type endopeptidase inhibitor activity. Involved in several processes, including collagen fibril organization; maintenance of blood vessel diameter homeostasis by renin-angiotensin; and positive regulation of biosynthetic process. Located in collagen-containing extracellular matrix. Is expressed in several structures, including liver; pancreas epithelium; urinary system; and yolk sac. Used to study alpha-2-plasmin inhibitor deficiency. Human ortholog (s) of this gene implicated in COVID-19 and alpha-2-plasmin inhibitor deficiency. Orthologous to human SERPINF2 (serpin family F member 2). |
| Form | Lyophilized powder/frozen liquid |
| Molecular Mass | 51.04 kDa |
| Purity | > 90 % as determined by SDS-PAGE |

 Tel: 1-631-559-9269 1-516-512-3133

 Email: info@creative-biomart.com  Fax: 1-631-938-8127

 45-1 Ramsey Road, Shirley, NY 11967, USA

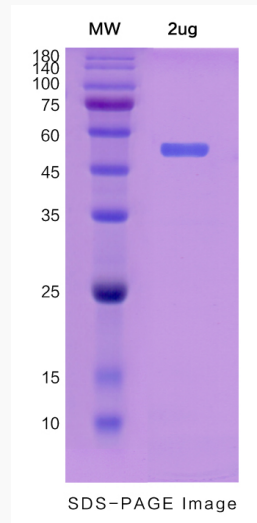
| | |
|-------------------------|---|
| Notes | For research use only. |
| Storage | Use a manual defrost freezer and avoid repeated freeze thaw cycles. Store at 2 to 8 centigrade for one week. Store at -20 to -80 centigrade for twelve months from the date of receipt. |
| Storage Buffer | Supplied as solution form in PBS or lyophilized from PBS. |
| Reconstitution | Reconstitute in sterile water for a stock solution. |
| Shipping | They are shipped out with dry ice/blue ice unless customers require otherwise. |
| GENE INFORMATION | |
| Gene Name | Serpinf2 serine (or cysteine) peptidase inhibitor, clade F, member 2 [Mus musculus (house mouse)] |
| Official Symbol | Serpinf2 |
| Synonyms | Serpinf2; serine (or cysteine) peptidase inhibitor, clade F, member 2; Pli; Serpimf2; alpha-2-antiplasmin; alpha-2-AP; alpha-2-PI; alpha-2-plasmin inhibitor; pigment epithelium derived factor; plasmin inhibitor alpha 2; serine (or cysteine) proteinase inhibitor, clade F, member 2; serpin F2 |
| Gene ID | 18816 |
| mRNA Refseq | NM_008878 |
| Protein Refseq | NP_032904 |
| UniProt ID | Q61247 |

 Tel: 1-631-559-9269 1-516-512-3133

 Email: info@creative-biomart.com  Fax: 1-631-938-8127

 45-1 Ramsey Road, Shirley, NY 11967, USA

SDS-PAGE



 Tel: 1-631-559-9269 1-516-512-3133

 Email: info@creative-biomart.com  Fax: 1-631-938-8127

 45-1 Ramsey Road, Shirley, NY 11967, USA