

Recombinant Mouse Serping1 Protein (Ala20-Gly504), C-His tagged

Cat. No. Serping1-6801M **Lot. No.** (See product label)

SPECIFICATION

Product Overview	Recombinant mouse Serping1 (Ala20-Gly504) fused with the C-terminal His tag was expressed in mammalian cells.
Species	Mouse
Source	Mammalian Cells
ProteinLength	Ala20-Gly504
Description	Enables complement binding activity and serine-type endopeptidase inhibitor activity. Predicted to be involved in negative regulation of complement activation, lectin pathway and negative regulation of endopeptidase activity. Predicted to act upstream of or within several processes, including complement activation, classical pathway; fibrinolysis; and negative regulation of peptidase activity. Located in extracellular space. Is expressed in several structures, including genitourinary system; neural ectoderm; notochord; pancreas mesenchyme; and visceral pericardium. Human ortholog (s) of this gene implicated in several diseases, including COVID-19; angioedema (multiple); cerebral infarction; pancreatitis; and toxic shock syndrome. Orthologous to human SERPING1 (serpin family G member 1).
Form	Lyophilized powder/frozen liquid
Molecular Mass	53.46 kDa

 Tel: 1-631-559-9269 1-516-512-3133

 Email: info@creative-biomart.com  Fax: 1-631-938-8127

 45-1 Ramsey Road, Shirley, NY 11967, USA

Purity	> 90 % as determined by SDS-PAGE
Notes	For research use only.
Storage	Use a manual defrost freezer and avoid repeated freeze thaw cycles. Store at 2 to 8 centigrade for one week. Store at -20 to -80 centigrade for twelve months from the date of receipt.
Storage Buffer	Supplied as solution form in PBS or lyophilized from PBS.
Reconstitution	Reconstitute in sterile water for a stock solution.
Shipping	They are shipped out with dry ice/blue ice unless customers require otherwise.

GENE INFORMATION

Gene Name	Serping1 serine (or cysteine) peptidase inhibitor, clade G, member 1 [Mus musculus (house mouse)]
Official Symbol	Serping1
Synonyms	Serping1; serine (or cysteine) peptidase inhibitor, clade G, member 1; C1nh; C1Inh; C1 Inh; C1INH.; plasma protease C1 inhibitor; C1 esterase inhibitor; C1 inhibitor; C1-inhibiting factor; complement component 1 inhibitor; serine (or cysteine) proteinase inhibitor, clade G (C1 inhibitor), member 1; serine (or cysteine) proteinase inhibitor, clade G, member 1; serpin G1
Gene ID	12258
mRNA Refseq	NM_009776

 Tel: 1-631-559-9269 1-516-512-3133

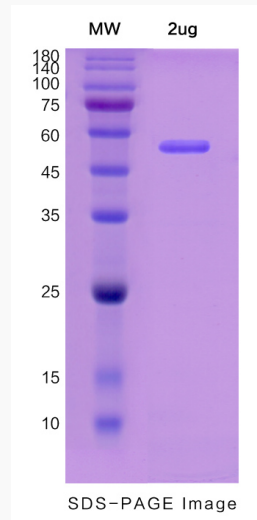
 Email: info@creative-biomart.com  Fax: 1-631-938-8127

 45-1 Ramsey Road, Shirley, NY 11967, USA

Protein Refseq NP_033906

UniProt ID P97290

SDS-PAGE



 Tel: 1-631-559-9269 1-516-512-3133

 Email: info@creative-biomart.com  Fax: 1-631-938-8127

 45-1 Ramsey Road, Shirley, NY 11967, USA