

Recombinant Rat Sftpa1 protein, His & GST-tagged

Cat. No. Sftpa1-7891R **Lot. No.** (See product label)

SPECIFICATION

Product Overview	Recombinant Rat Sftpa1 aa. (Asn21~Phe248 (Accession # P08427)) fused with N-terminal His & GST tag was produced in E. coli cells.
Species	Rat
Source	E.coli
ProteinLength	Asn21~Phe248
Form	Freeze-dried powder
Molecular Mass	Predicted Molecular Mass: 56.6kDa
Endotoxin	<1.0EU per 1g (determined by the LAL method)
Purity	>95%
Characteristic	The isoelectric point is 5.6.
Applications	SDS-PAGE; WB; ELISA; IP
Stability	The thermal stability is described by the loss rate. The loss rate was determined by accelerated thermal degradation test, that is, incubate the protein at 37°C for 48h, and no obvious degradation and precipitation were observed. The loss rate is less than 5% within the expiration date under appropriate storage condition.

 Tel: 1-631-559-9269 1-516-512-3133

 Email: info@creative-biomart.com  Fax: 1-631-938-8127

 45-1 Ramsey Road, Shirley, NY 11967, USA

Storage	Avoid repeated freeze/thaw cycles. Store at 2-8°C for one month. Aliquot and store at -80°C for 12 months.
Storage buffer	Supplied as lyophilized form in PBS, pH7.4, containing 5% trehalose, 0.01% sarcosyl
Reconstitution	Reconstitute in sterile PBS, pH7.2-pH7.4.

GENE INFORMATION

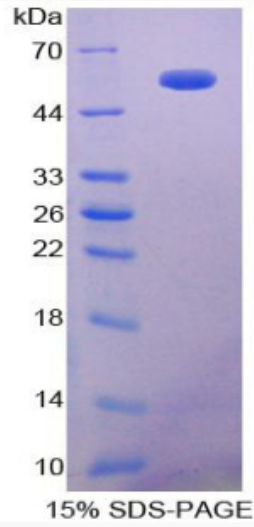
Gene Name	Sftpa1 surfactant protein A1 [Rattus norvegicus (Norway rat)]
Official Symbol	Sftpa1
Synonyms	PSAP; SP-A; PSP-A; Sftp1; Sftpa; Sftpl; Surfactant-associated protein 1 (pulmonary surfactant protein, SP-A); pulmonary surfactant-associated protein A-like; surfactant, pulmonary-associated protein A1; pulmonary surfactant-associated protein A
Gene ID	24773
mRNA Refseq	NM_001270645.1
Protein Refseq	NP_001257574.1
UniProt ID	P08427

 Tel: 1-631-559-9269 1-516-512-3133

 Email: info@creative-biomart.com  Fax: 1-631-938-8127

 45-1 Ramsey Road, Shirley, NY 11967, USA

SDS-PAGE



 Tel: 1-631-559-9269 1-516-512-3133

 Email: info@creative-biomart.com  Fax: 1-631-938-8127

 45-1 Ramsey Road, Shirley, NY 11967, USA