

Recombinant Rat Sftpb protein, His & T7-tagged

Cat. No. Sftpb-1721R Lot. No. (See product label)

SPECIFICATION

Product Overview	Recombinant Rat Sftpb aa. (Arg111~His329 (Accession # XM_006236657.2)) fused with N-terminal His & T7 tag was produced in E. coli cells.
Species	Rat
Source	E.coli
ProteinLength	Arg111~His329
Description	Acts to lower surface tension in lung alveoli.
Form	Freeze-dried powder
Molecular Mass	Predicted Molecular Mass: 28.4kDa
Endotoxin	<1.0EU per 1ug (determined by the LAL method)
Purity	>95%
Characteristic	The isoelectric point is 8.3.
Applications	SDS-PAGE; WB; ELISA; IP.
Stability	The thermal stability is described by the loss rate of the target protein. The loss rate was determined by accelerated thermal degradation test, that is, incubate the protein

 Tel: 1-631-559-9269 1-516-512-3133

 Email: info@creative-biomart.com  Fax: 1-631-938-8127

 45-1 Ramsey Road, Shirley, NY 11967, USA

at 37°C for 48h, and no obvious degradation and precipitation were observed. (Referring from China Biological Products Standard, which was calculated by the Arrhenius equation.) The loss of this protein is less than 5% within the expiration date under appropriate storage condition.

Storage	Avoid repeated freeze/thaw cycles. Store at 2-8°C for one month. Aliquot and store at -80°C for 12 months.
Storage buffer	Supplied as lyophilized form in PBS, pH7.4, containing 5% trehalose, 0.01% sarcosyl.
Reconstitution	Reconstitute in sterile PBS, pH7.2-pH7.4.

GENE INFORMATION

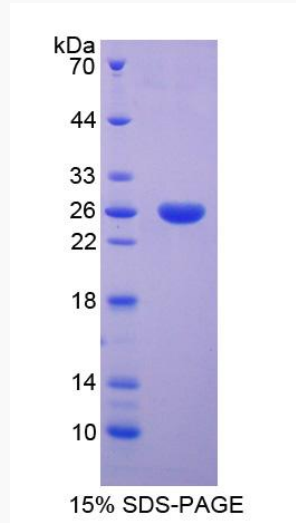
Gene Name	Sftpb surfactant protein B [<i>Rattus norvegicus</i> (Norway rat)]
Official Symbol	Sftpb
Synonyms	Sftpb; surfactant protein B; Sp-b; pulmonary surfactant-associated protein B; pulmonary surfactant-associated proteolipid SPL(Phe); surfactant associated protein B; surfactant, pulmonary-associated protein B
Gene ID	192155
mRNA Refseq	NM_138842.1
Protein Refseq	NP_620197.1
UniProt ID	P22355

 Tel: 1-631-559-9269 1-516-512-3133

 Email: info@creative-biomart.com  Fax: 1-631-938-8127

 45-1 Ramsey Road, Shirley, NY 11967, USA

SDS-PAGE



 Tel: 1-631-559-9269 1-516-512-3133

 Email: info@creative-biomart.com  Fax: 1-631-938-8127

 45-1 Ramsey Road, Shirley, NY 11967, USA