

Recombinant Mouse Sftpc Protein, His-tagged

Cat. No. Sftpc-2055M **Lot. No.** (See product label)

SPECIFICATION

Product Overview	Recombinant Mouse Sftpc Protein (Phe94-Ile193) with N-His tag was expressed in E. coli.
Species	Mouse
Source	E.coli
ProteinLength	Phe94-Ile193
Description	Predicted to enable identical protein binding activity. Located in cytoplasm and extracellular region. Is expressed in several structures, including lung and main bronchus epithelium. Used to study desquamative interstitial pneumonia. Human ortholog(s) of this gene implicated in asthma; lung disease (multiple); and respiratory syncytial virus infectious disease. Orthologous to human SFTPC (surfactant protein C).
Form	Freeze-dried powder
Molecular Mass	Predicted Molecular Mass: 12.1 kDa Accurate Molecular Mass: 14 kDa
Purity	> 97%
Applications	Cell culture; Activity Assays.

 Tel: 1-631-559-9269 1-516-512-3133

 Email: info@creative-biomart.com  Fax: 1-631-938-8127

 45-1 Ramsey Road, Shirley, NY 11967, USA

Stability	The thermal stability is described by the loss rate. The loss rate was determined by accelerated thermal degradation test, that is, incubate the protein at 37 centigrade for 48h, and no obvious degradation and precipitation were observed. The loss rate is less than 5% within the expiration date under appropriate storage condition.
Storage	Avoid repeated freeze/thaw cycles. Store at 2-8 centigrade for one month. Aliquot and store at -80 centigrade for 12 months.
Storage Buffer	20mM Tris, 150mM NaCl, pH8.0, containing 1mM EDTA, 1mM DTT, 0.01% SKL, 5% Trehalose and Proclin300.
Reconstitution	Reconstitute in 20mM Tris, 150mM NaCl (pH8.0) to a concentration of 0.1-1.0 mg/mL. Do not vortex.

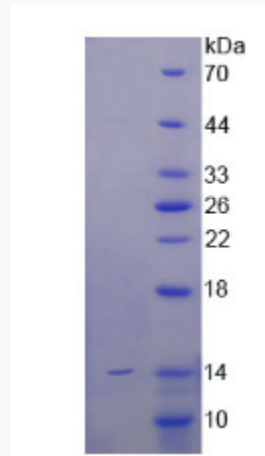
GENE INFORMATION

Gene Name	Sftpc surfactant associated protein C [Mus musculus (house mouse)]
Official Symbol	Sftpc
Synonyms	Sftpc; surfactant associated protein C; SP5; SPC; SP-C; Sftp2; Bricd6; Sftp-2; pro-SpC; pulmonary surfactant-associated protein C; pulmonary surfactant-associated proteolipid SPL(Val)
Gene ID	20389
mRNA Refseq	NM_011359
Protein Refseq	NP_035489
UniProt ID	P21841

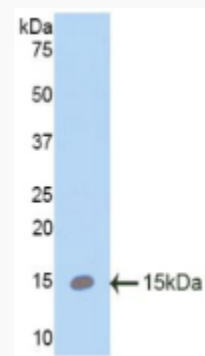
 Tel: 1-631-559-9269 1-516-512-3133

 Email: info@creative-biomart.com  Fax: 1-631-938-8127

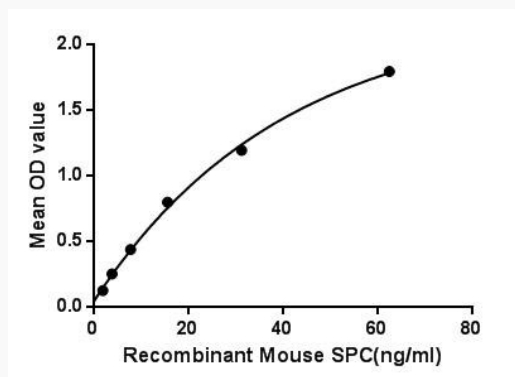
 45-1 Ramsey Road, Shirley, NY 11967, USA



WB



Bioactivity



Tel: 1-631-559-9269 1-516-512-3133

Email: info@creative-biomart.com Fax: 1-631-938-8127

45-1 Ramsey Road, Shirley, NY 11967, USA



The binding activity of SPC with EIF2aK3.

 Tel: 1-631-559-9269 1-516-512-3133

 Email: info@creative-biomart.com  Fax: 1-631-938-8127

 45-1 Ramsey Road, Shirley, NY 11967, USA