

Recombinant Rat Sftpc Protein, His-tagged

Cat. No. Sftpc-2056R Lot. No. (See product label)

SPECIFICATION

Product Overview	Recombinant Rat Sftpc Protein (Phe95-Ile194) with N-His tag was expressed in E. coli.
Species	Rat
Source	E.coli
ProteinLength	Phe95-Ile194
Description	Enables identical protein binding activity. Involved in several processes, including cellular response to mechanical stimulus; cellular response to nitric oxide; and response to vitamin A. Located in alveolar lamellar body; extracellular space; and multivesicular body. Biomarker of bacterial pneumonia and newborn respiratory distress syndrome. Human ortholog(s) of this gene implicated in asthma; lung disease (multiple); and respiratory syncytial virus infectious disease. Orthologous to human SFTPC (surfactant protein C).
Form	Freeze-dried powder
Molecular Mass	Predicted Molecular Mass: 12.1 kDa Accurate Molecular Mass: 14 kDa
Purity	> 95%
Applications	Cell culture; Activity Assays.

 Tel: 1-631-559-9269 1-516-512-3133

 Email: info@creative-biomart.com  Fax: 1-631-938-8127

 45-1 Ramsey Road, Shirley, NY 11967, USA

Stability	The thermal stability is described by the loss rate. The loss rate was determined by accelerated thermal degradation test, that is, incubate the protein at 37 centigrade for 48h, and no obvious degradation and precipitation were observed. The loss rate is less than 5% within the expiration date under appropriate storage condition.
Storage	Avoid repeated freeze/thaw cycles. Store at 2-8 centigrade for one month. Aliquot and store at -80 centigrade for 12 months.
Storage Buffer	20mM Tris, 150mM NaCl, pH8.0, containing 1mM EDTA, 1mM DTT, 0.01% SKL, 5% Trehalose and Proclin300.
Reconstitution	Reconstitute in 20mM Tris, 150mM NaCl (pH8.0) to a concentration of 0.1-1.0 mg/mL. Do not vortex.

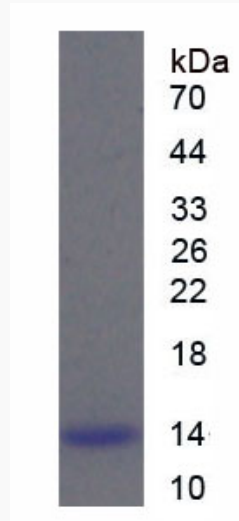
GENE INFORMATION

Gene Name	Sftpc surfactant protein C [Rattus norvegicus (Norway rat)]
Official Symbol	Sftpc
Synonyms	Sftpc; surfactant protein C; SP-C; pulmonary surfactant-associated protein C; Surfactant, pulmonary-associated protein C; pulmonary surfactant-associated proteolipid SPL(Val); surfactant associated protein C
Gene ID	50683
mRNA Refseq	NM_017342
Protein Refseq	NP_059038
UniProt ID	P11685

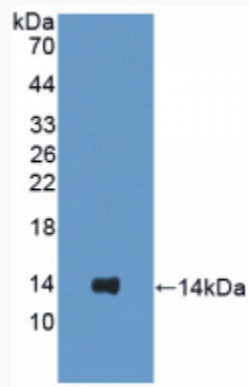
 Tel: 1-631-559-9269 1-516-512-3133

 Email: info@creative-biomart.com  Fax: 1-631-938-8127

 45-1 Ramsey Road, Shirley, NY 11967, USA



WB

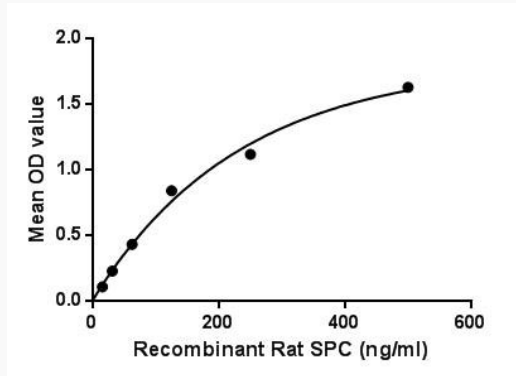


 Tel: 1-631-559-9269 1-516-512-3133

 Email: info@creative-biomart.com  Fax: 1-631-938-8127

 45-1 Ramsey Road, Shirley, NY 11967, USA

Bioactivity



The binding activity of SPC with Mlg.

 Tel: 1-631-559-9269 1-516-512-3133

 Email: info@creative-biomart.com  Fax: 1-631-938-8127

 45-1 Ramsey Road, Shirley, NY 11967, USA