

## Recombinant Rat Sftpd protein, His-tagged

Cat. No. Sftpd-5768R Lot. No. (See product label)

### SPECIFICATION

<b>Product Overview</b>	Recombinant Rat Sftpd aa. (Ala20~Phe374 (Accession # P35248)) fused with N-terminal His tag was produced in E. coli cells.
<b>Species</b>	Rat
<b>Source</b>	E.coli
<b>ProteinLength</b>	Ala20~Phe374
<b>Description</b>	Binds carbohydrates; may play a role in defense response in the lung.
<b>Form</b>	Freeze-dried powder
<b>Molecular Mass</b>	14&44kDa as determined by SDS-PAGE reducing conditions.
<b>Endotoxin</b>	<1.0EU per 1g (determined by the LAL method)
<b>Purity</b>	>95%
<b>Characteristic</b>	The isoelectric point is 7.1.
<b>Applications</b>	SDS-PAGE; WB; ELISA; IP.
<b>Stability</b>	The thermal stability is described by the loss rate. The loss rate was determined by accelerated thermal degradation test, that is, incubate the protein at 37°C for 48h,

 Tel: 1-631-559-9269 1-516-512-3133

 Email: [info@creative-biomart.com](mailto:info@creative-biomart.com)  Fax: 1-631-938-8127

 45-1 Ramsey Road, Shirley, NY 11967, USA

and no obvious degradation and precipitation were observed. The loss rate is less than 5% within the expiration date under appropriate storage condition.

**Storage**

Avoid repeated freeze/thaw cycles. Store at 2-8°C for one month. Aliquot and store at -80°C for 12 months.

**Storage buffer**

Supplied as lyophilized form in PBS, pH7.4, containing 5% sucrose, 0.05% sarcosyl.

**Reconstitution**

Reconstitute in sterile PBS, pH7.2-pH7.4.

## GENE INFORMATION

**Gene Name**

[Sftpd surfactant protein D \[ Rattus norvegicus \(Norway rat\) \]](#)

**Official Symbol**

[Sftpd](#)

**Synonyms**

Sftpd; surfactant protein D; SPD; SP-D; pulmonary surfactant-associated protein D; CP4; PSP-D; lung surfactant protein D; pulmonary surfactant protein D; surfactant associated protein D; surfactant, pulmonary-associated protein D

**Gene ID**

[25350](#)

**mRNA Refseq**

[NM\\_012878.2](#)

**Protein Refseq**

[NP\\_037010.1](#)

**UniProt ID**

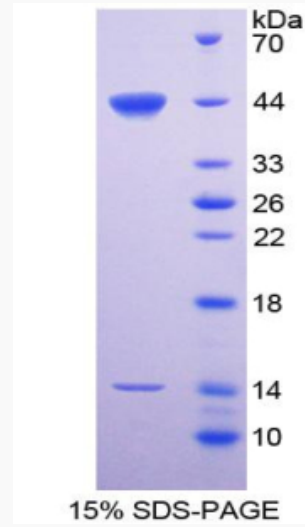
[P35248](#)

 Tel: 1-631-559-9269 1-516-512-3133

 Email: [info@creative-biomart.com](mailto:info@creative-biomart.com)  Fax: 1-631-938-8127

 45-1 Ramsey Road, Shirley, NY 11967, USA

SDS-PAGE



 Tel: 1-631-559-9269 1-516-512-3133

 Email: [info@creative-biomart.com](mailto:info@creative-biomart.com)  Fax: 1-631-938-8127

 45-1 Ramsey Road, Shirley, NY 11967, USA