

## Recombinant Mouse Sh2d1a protein, His & T7-tagged

**Cat. No.** Sh2d1a-1500M    **Lot. No.** (See product label)

### SPECIFICATION

<b>Product Overview</b>	Recombinant Mouse Sh2d1a aa. (Lys18~Gly115 (Accession # O88890)) fused with N-terminal His & T7 tag was produced in E. coli cells.
<b>Species</b>	Mouse
<b>Source</b>	E.coli
<b>ProteinLength</b>	Lys18~Gly115
<b>Form</b>	Freeze-dried powder
<b>Molecular Mass</b>	Predicted Molecular Mass: 14.6kDa
<b>Endotoxin</b>	<1.0EU per 1ug (determined by the LAL method)
<b>Purity</b>	>95%
<b>Applications</b>	SDS-PAGE; WB; ELISA; IP.
<b>Stability</b>	The thermal stability is described by the loss rate. The loss rate was determined by accelerated thermal degradation test, that is, incubate the protein at 37°C for 48h, and no obvious degradation and precipitation were observed. The loss rate is less than 5% within the expiration date under appropriate storage condition.
<b>Storage</b>	Avoid repeated freeze/thaw cycles. Store at 2-8°C for one month. Aliquot and store at

 Tel: 1-631-559-9269    1-516-512-3133

 Email: [info@creative-biomart.com](mailto:info@creative-biomart.com)     Fax: 1-631-938-8127

 45-1 Ramsey Road, Shirley, NY 11967, USA

-80°C for 12 months.

**Storage buffer** Supplied as lyophilized form in PBS, pH7.4, containing 5% sucrose, 0.01% sarcosyl.

**Reconstitution** Reconstitute in sterile PBS, pH7.2-pH7.4.

**Isoelectric Point** 9.4

## GENE INFORMATION

**Gene Name** [Sh2d1a SH2 domain containing 1A \[ Mus musculus \(house mouse\) \]](#)

**Official Symbol** [Sh2d1a](#)

**Synonyms** Sh2d1a; SH2 domain containing 1A; SAP; Gm686; SH2 domain-containing protein 1A; Duncan disease homolog; SH2 domain protein 1A; SLAM-associated protein isoform SAP-2; T-cell signal transduction molecule SAP; signaling lymphocytic activation molecule-associated protein

**Gene ID** [20400](#)

**mRNA Refseq** [NM\\_001313688.1](#)

**Protein Refseq** [NP\\_001300617.1](#)

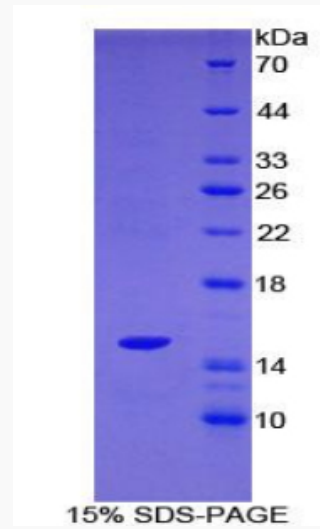
**UniProt ID** [O88890](#)

 Tel: 1-631-559-9269 1-516-512-3133

 Email: [info@creative-biomart.com](mailto:info@creative-biomart.com)  Fax: 1-631-938-8127

 45-1 Ramsey Road, Shirley, NY 11967, USA

**SDS-PAGE**



 Tel: 1-631-559-9269 1-516-512-3133

 Email: [info@creative-biomart.com](mailto:info@creative-biomart.com)  Fax: 1-631-938-8127

 45-1 Ramsey Road, Shirley, NY 11967, USA