

Recombinant Rat Shh protein, His-tagged

Cat. No. Shh-1856R **Lot. No.** (See product label)

SPECIFICATION

Product Overview	Recombinant Rat Shh aa. (Gly28~Val192 (Accession # Q63673)) fused with N-terminal His tag was produced in E. coli cells.
Species	Rat
Source	E.coli
ProteinLength	Gly28~Val192
Description	Plays a role in neurogenesis; regulates proliferation of adult hippocampal neural stem cells.
Form	Freeze-dried powder
Molecular Mass	Predicted Molecular Mass: 20.4kDa.
Endotoxin	<1.0EU per 1ug (determined by the LAL method)
Purity	>90%
Characteristic	The isoelectric point is 8.5.
Applications	SDS-PAGE; WB; ELISA; IP.
Stability	The thermal stability is described by the loss rate of the target protein. The loss rate

 Tel: 1-631-559-9269 1-516-512-3133

 Email: info@creative-biomart.com  Fax: 1-631-938-8127

 45-1 Ramsey Road, Shirley, NY 11967, USA

was determined by accelerated thermal degradation test, that is, incubate the protein at 37°C for 48h, and no obvious degradation and precipitation were observed. (Referring from China Biological Products Standard, which was calculated by the Arrhenius equation.) The loss of this protein is less than 5% within the expiration date under appropriate storage condition.

Storage	Avoid repeated freeze/thaw cycles. Store at 2-8°C for one month. Aliquot and store at -80°C for 12 months.
Storage Buffer	Supplied as lyophilized form in 20mM Tris, 150mM NaCl, pH8.0, containing 1mM EDTA, 1mM DTT, 0.01% sarcosyl, 5% trehalose, and preservative.
Reconstitution	Reconstitute in sterile ddH ₂ O.

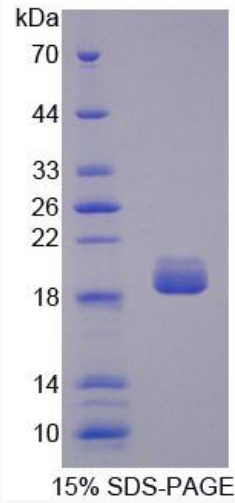
GENE INFORMATION

Gene Name	Shh sonic hedgehog [<i>Rattus norvegicus</i> (Norway rat)]
Official Symbol	Shh
Synonyms	Lta4h; leukotriene A4 hydrolase; leukotriene A-4 hydrolase; LTA-4 hydrolase; LTA4 hydrolase
Gene ID	29499
mRNA Refseq	NM_017221.1
Protein Refseq	NP_058917.1
UniProt ID	Q63673


 Tel: 1-631-559-9269 1-516-512-3133

 Email: info@creative-biomart.com  Fax: 1-631-938-8127

 45-1 Ramsey Road, Shirley, NY 11967, USA



SDS-PAGE

 Tel: 1-631-559-9269 1-516-512-3133

 Email: info@creative-biomart.com  Fax: 1-631-938-8127

 45-1 Ramsey Road, Shirley, NY 11967, USA