

Recombinant Mouse Shh Protein (Cys25-Gly198, Cys25Ile-Ile)

Cat. No. Shh-6803M **Lot. No.** (See product label)

SPECIFICATION

Product Overview	Recombinant mouse SHH (Cys25-Gly198, Cys25Ile-Ile) without tag was expressed in E. coli.
Species	Mouse
Source	E.coli
ProteinLength	Cys25-Gly198, Cys25Ile-Ile
Description	Enables glycosaminoglycan binding activity; laminin-1 binding activity; and patched binding activity. Involved in several processes, including hematopoietic or lymphoid organ development; positive regulation of T cell activation; and regulation of smooth muscle cell differentiation. Acts upstream of or within several processes, including animal organ development; limb morphogenesis; and neurogenesis. Located in several cellular components, including cell surface; extracellular space; and membrane raft. Is expressed in several structures, including alimentary system; central nervous system; genitourinary system; limb bud; and sensory organ. Used to study brachydactyly type A1 and holoprosencephaly 3. Human ortholog (s) of this gene implicated in several diseases, including Hirschsprung's disease; holoprosencephaly (multiple); hypoplastic or aplastic tibia with polydactyly; middle cerebral artery infarction; and polydactyly. Orthologous to human SHH (sonic hedgehog signaling molecule).
Form	Lyophilized powder/frozen liquid

 Tel: 1-631-559-9269 1-516-512-3133

 Email: info@creative-biomart.com  Fax: 1-631-938-8127

 45-1 Ramsey Road, Shirley, NY 11967, USA

Molecular Mass	19.14 kDa
Purity	> 90 % as determined by SDS-PAGE
Notes	For research use only.
Storage	Use a manual defrost freezer and avoid repeated freeze thaw cycles. Store at 2 to 8 centigrade for one week. Store at -20 to -80 centigrade for twelve months from the date of receipt.
Storage Buffer	Supplied as solution form in PBS or lyophilized from PBS.
Reconstitution	Reconstitute in sterile water for a stock solution.
Shipping	They are shipped out with dry ice/blue ice unless customers require otherwise.

GENE INFORMATION

Gene Name	Shh sonic hedgehog [<i>Mus musculus</i> (house mouse)]
Official Symbol	Shh
Synonyms	SHH; sonic hedgehog; HLP3, HPE3, sonic hedgehog (<i>Drosophila</i>) homolog, sonic hedgehog homolog (<i>Drosophila</i>); sonic hedgehog protein; HHG1; MCOPCB5; SMMCI; TPT; TPTPS; sonic hedgehog homolog; HLP3; HPE3;
Gene ID	20423
mRNA Refseq	NM_009170
Protein Refseq	NP_033196

 Tel: 1-631-559-9269 1-516-512-3133

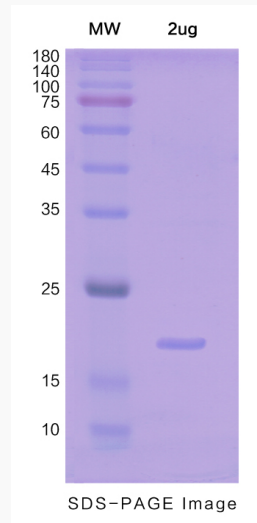
 Email: info@creative-biomart.com  Fax: 1-631-938-8127

 45-1 Ramsey Road, Shirley, NY 11967, USA

UniProt ID

Q62226

SDS-PAGE



 Tel: 1-631-559-9269 1-516-512-3133

 Email: info@creative-biomart.com  Fax: 1-631-938-8127

 45-1 Ramsey Road, Shirley, NY 11967, USA