

Recombinant Mouse Shh Protein, His-tagged

Cat. No. Shh-7339M **Lot. No.** (See product label)

SPECIFICATION

Product Overview	Recombinant mouse SHH protein, fused to His-tag at C-terminus, was expressed in E. coli and purified by using conventional chromatography techniques.
Species	Mouse
Source	E.coli
ProteinLength	25-198
Description	The C-terminal part of the sonic hedgehog protein precursor displays an autoproteolysis and a cholesterol transferase activity. Both activities result in the cleavage of the full-length protein into two parts (ShhN and ShhC) followed by the covalent attachment of a cholesterol moiety to the C-terminal of the newly generated ShhN. Both activities occur in the reticulum endoplasmic. Once cleaved, ShhC is degraded in the endoplasmic reticulum.
Form	Liquid
Molecular Mass	20.8 kDa
AA Sequence	MCGPGRGFGKRRHPKLTPLAYKQFIPNVAEKT LGASGRYEGKITRNSERFKELTP NYNPDIIFKDEENTGADRLMTQRCKDKLNLALISVMNQWPGVKLRVTEGWDEDGHH SEESLHYEGRAVDITTSRDRSKYGMLARLAVEAGFDWVYYESKAHIHCSVKAENS VAAKSGGLEHHHHHH

 Tel: 1-631-559-9269 1-516-512-3133

 Email: info@creative-biomart.com  Fax: 1-631-938-8127

 45-1 Ramsey Road, Shirley, NY 11967, USA

Purity	> 95 % by SDS-PAGE
Stability	Shelf life: one year from despatch.
Storage	Store undiluted at 2-8 centigrade for up to two weeks or (in aliquots) at -20 or -70 centigrade for longer. Avoid repeated freezing and thawing.
Concentration	1.0 mg/mL (determined by Bradford assay)
Storage Buffer	20 mM Tris-HCl buffer (pH 8.0) containing 10 % glycerol, 1 mM DTT
GENE INFORMATION	
Gene Name	Shh sonic hedgehog [<i>Mus musculus</i> (house mouse)]
Official Symbol	Shh
Synonyms	Shh; sonic hedgehog; Hx; Dsh; Hhg1; Hxl3; ShhNC; M100081; 9530036O11Rik; sonic hedgehog protein; HHG-1; hemimelic extra toes; shh unprocessed N-terminal signaling and C-terminal autoprocessing domains; short digits
Gene ID	20423
mRNA Refseq	NM_009170
Protein Refseq	NP_033196
UniProt ID	Q62226

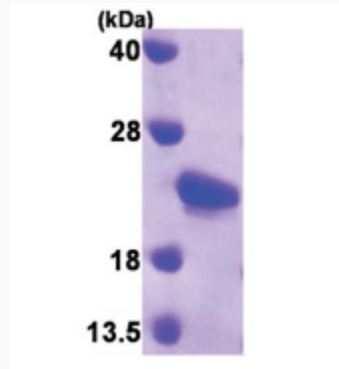
 Tel: 1-631-559-9269 1-516-512-3133

 Email: info@creative-biomart.com  Fax: 1-631-938-8127

 45-1 Ramsey Road, Shirley, NY 11967, USA



SDS-PAGE



Tel: 1-631-559-9269 1-516-512-3133

Email: info@creative-biomart.com Fax: 1-631-938-8127

45-1 Ramsey Road, Shirley, NY 11967, USA