

## Recombinant Mouse Sigirr protein, His & GST-tagged

Cat. No. Sigirr-1951M Lot. No. (See product label)

### SPECIFICATION

<b>Product Overview</b>	Recombinant Mouse Sigirr aa. (Met1~His117 (Accession # Q9JLZ8)) fused with N-terminal His & GST tag was produced in E. coli cells.
<b>Species</b>	Mouse
<b>Source</b>	E.coli
<b>ProteinLength</b>	Met1~His117
<b>Form</b>	Freeze-dried powder
<b>Molecular Mass</b>	Predicted Molecular Mass: 39.7kDa
<b>Endotoxin</b>	<1.0EU per 1ug (determined by the LAL method)
<b>Purity</b>	>95%
<b>Applications</b>	SDS-PAGE; WB; ELISA; IP.
<b>Stability</b>	The thermal stability is described by the loss rate. The loss rate was determined by accelerated thermal degradation test, that is, incubate the protein at 37°C for 48h, and no obvious degradation and precipitation were observed. The loss rate is less than 5% within the expiration date under appropriate storage condition.
<b>Storage</b>	Avoid repeated freeze/thaw cycles. Store at 2-8°C for one month. Aliquot and store at

 Tel: 1-631-559-9269 1-516-512-3133

 Email: [info@creative-biomart.com](mailto:info@creative-biomart.com)  Fax: 1-631-938-8127

 45-1 Ramsey Road, Shirley, NY 11967, USA

-80°C for 12 months.

**Storage buffer** Supplied as lyophilized form in PBS, pH7.4, containing 5% sucrose, 0.01% sarcosyl.

**Reconstitution** Reconstitute in sterile PBS, pH7.2-pH7.4.

**Isoelectric Point** 6

## GENE INFORMATION

**Gene Name** [Sigirr single immunoglobulin and toll-interleukin 1 receptor \(TIR\) domain \[ Mus musculus \(house mouse\) \]](#)

**Official Symbol** [Sigirr](#)

**Synonyms** Sigirr; single immunoglobulin and toll-interleukin 1 receptor (TIR) domain; TIR8; AI256711; single Ig IL-1-related receptor; single Ig IL-1 receptor related protein; single Ig IL-1R-related molecule; single Ig IL-1R-related protein; single immunoglobulin domain-containing IL1R-related protein; toll/interleukin-1 receptor 8

**Gene ID** [24058](#)

**mRNA Refseq** [NM\\_023059.3](#)

**Protein Refseq** [NP\\_075546.2](#)

**UniProt ID** [Q9JLZ8](#)

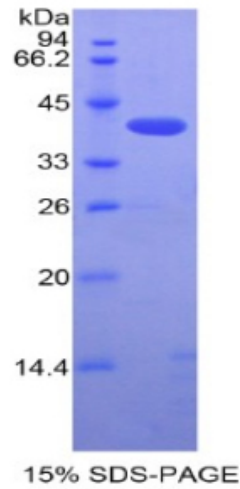
 Tel: 1-631-559-9269 1-516-512-3133

 Email: [info@creative-biomart.com](mailto:info@creative-biomart.com)  Fax: 1-631-938-8127

 45-1 Ramsey Road, Shirley, NY 11967, USA



SDS-PAGE



Tel: 1-631-559-9269 1-516-512-3133

Email: [info@creative-biomart.com](mailto:info@creative-biomart.com) Fax: 1-631-938-8127

45-1 Ramsey Road, Shirley, NY 11967, USA