

Recombinant Mouse Siglec15 protein, His-tagged, Biotinylated, Primary Amine Labeling

Cat. No. Siglec15-1123M Lot. No. (See product label)

SPECIFICATION

Product Overview	Primary Amine Labeling Biotinylated Recombinant Mouse Siglec15 protein(A7E1W8-1)(Arg24-Thr262), fused with C-terminal His tag, was expressed in HEK293.
Species	Mouse
Source	HEK293
ProteinLength	Arg24-Thr262
Tag	C-His
Conjugation/Label	Biotinl; Primary Amine Labeling
Form	Supplied as 0.22µm filtered solution in 20mM PB, 0.5M NaCl, 0.1M L-Arginine (pH 7.4).
Molecular Mass	The protein has a predicted MW of 26.7 kDa. Due to glycosylation, the protein migrates to 35-43 kDa based on Tris-Bis PAGE result.
Endotoxin	Less than 1EU per µg by the LAL method.
Purity	> 95% as determined by Tris-Bis PAGE
Storage	Valid for 12 months from date of receipt when stored at -80°C. Recommend to aliquot

 Tel: 1-631-559-9269 1-516-512-3133

 Email: info@creative-biomart.com  Fax: 1-631-938-8127

 45-1 Ramsey Road, Shirley, NY 11967, USA

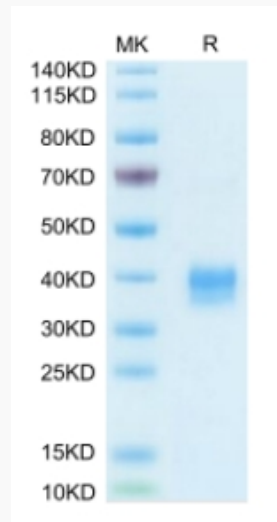
the protein into smaller quantities for optimal storage. Please do not repeated freeze-thaw cycles.

Reconstitution

It is recommended that sterile water be added to the vial to prepare a stock solution of 0.2 ug/ul. Centrifuge the vial at 4°C before opening to recover the entire contents.

Conjugation

Biotin

Tris-Bis PAGE

 Tel: 1-631-559-9269 1-516-512-3133

 Email: info@creative-biomart.com  Fax: 1-631-938-8127

 45-1 Ramsey Road, Shirley, NY 11967, USA