

## Recombinant Mouse Sirpa Protein (Lys32-Asn372), C-Fc tagged

Cat. No. Sirpa-5734M    Lot. No. (See product label)

### SPECIFICATION

<b>Product Overview</b>	Recombinant mouse SIRPA (Lys32-Asn372) fused with the C-terminal Fc tag was expressed in mammalian cells.
<b>Species</b>	Mouse
<b>Source</b>	Mammalian Cells
<b>ProteinLength</b>	Lys32-Asn372
<b>Form</b>	Lyophilized powder/frozen liquid
<b>Molecular Mass</b>	62.51 kDa
<b>Purity</b>	> 90 % as determined by SDS-PAGE
<b>Notes</b>	For research use only.
<b>Storage</b>	Use a manual defrost freezer and avoid repeated freeze thaw cycles. Store at 2 to 8 centigrade for one week. Store at -20 to -80 centigrade for twelve months from the date of receipt.
<b>Storage Buffer</b>	Supplied as solution form in PBS or lyophilized from PBS.
<b>Reconstitution</b>	Reconstitute in sterile water for a stock solution.

 Tel: 1-631-559-9269    1-516-512-3133

 Email: [info@creative-biomart.com](mailto:info@creative-biomart.com)     Fax: 1-631-938-8127

 45-1 Ramsey Road, Shirley, NY 11967, USA

**Shipping** They are shipped out with dry ice/blue ice unless customers require otherwise.

## GENE INFORMATION

**Gene Name** [Sirpa signal-regulatory protein alpha \[ Mus musculus \(house mouse\) \]](#)

**Official Symbol** [Sirpa](#)

**Synonyms** SIRPA; signal-regulatory protein alpha; tyrosine-protein phosphatase non-receptor type substrate 1; mSIRP-alpha1; sirp-alpha-1; myD-1 antigen; SHP substrate 1; inhibitory receptor SHPS-1; signal-regulatory protein alpha-1; CD172 antigen-like family member A; brain immunological-like with tyrosine-based motifs; protein tyrosine phosphatase, non-receptor type substrate 1; brain Ig-like molecule with tyrosine-based activation motifs; Bit; P84; SIRP; SHP-1; CD172a; Ptpns1; SHPS-1; AI835480;

**Gene ID** [19261](#)

**mRNA Refseq** [NM\\_001177646](#)

**Protein Refseq** [NP\\_001171117](#)

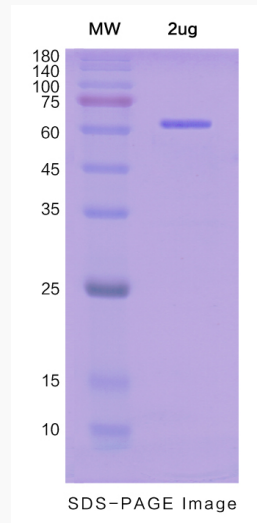
**UniProt ID** [P97797](#)

 Tel: 1-631-559-9269 1-516-512-3133

 Email: [info@creative-biomart.com](mailto:info@creative-biomart.com)  Fax: 1-631-938-8127

 45-1 Ramsey Road, Shirley, NY 11967, USA

**SDS-PAGE**



 Tel: 1-631-559-9269 1-516-512-3133

 Email: [info@creative-biomart.com](mailto:info@creative-biomart.com)  Fax: 1-631-938-8127

 45-1 Ramsey Road, Shirley, NY 11967, USA